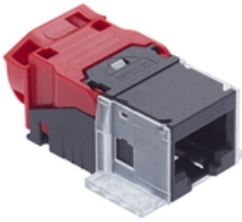


R813507 Connection Module Cat.6A EL, 1xRJ45/u, 100x

090.7165

**Description**

The module for the classic office cabling. Easy to install with solid Cat.6A performance.

Scope of supply

- RJ45 Cat.6A EL connection module, unshielded
- Mounting plate
- Dust cover

Weight

8.100 G

Technical Data

| | |
|-------------------------------|--|
| Standardisation | IEC 60603-7-41: Electrical Characteristics of the Telecommunication Outlets; ISO/IEC 11801 ed. 2.2: June 2011; EN 50173-1: May 2011; |
| Connector class | Connection module |
| Connector type (A) | RJ45 |
| Category connector (A) | Cat.6A ISO |
| Shielding - connector (A) | No |
| Holder for connector / module | Support Plate |
| Color | red / black |
| Wiring diagram | 568A / 568B |
| Poles | 8 |

Tender text

Connection Module, Cat.6A EL, 1 x RJ45, unshielded

RJ45 connection module of Cat.6A ISO, for the setting up of transmission channels of Class EA with up to 4 connectors acc. to ISO/IEC 11801 ed. 2.2, June 2011, EN 50173-1 May 2011 (DIN EN 50173-1), complies with Cat.6A requirements of the standards ISO/IEC 11801 ed. 2.2, June 2011, EN 50173-1 May 2011, as well the U.S. standard Cat.6A according to TIA 568-C.2, re-embedded tested in acc. with IEC 60603-7-41 and 60512-27-100, interoperable and backwards compatible with Category 6 and Category 5e.

Suitable for 10GBASE-T applications in acc. with IEEE 802.3™ Section Four up to 500 MHz and 100 m.

Tested in line with R&M's manufacturing control, performing 100% inspection. Each module has an own serial number and is traceable.

Compatible with RJ standard plugs (RJ11, RJ12, RJ45), connection of installation cables AWG 26 – 22 (0.4 mm – 0.65 mm) and flexible cables AWG 26/7 – AWG 22/7 without special tools. Parallel pair termination without crossover in acc. with TIA 568-A/B, gold-plated bronze contacts for >1000 mating cycles, IDC contacts with ≥4 insertion cycles acc. to IEC 60352-3, contact resistance 1000 Veff. PoE and PoE+ compatible according to IEC 60512-99-001. With integral cable strain relief, including dust cover. Red / black plastic housing.

Material: halogen-free and heavy-metal free in acc. with EU directives RoHS 2.

Connection module Cat.6A EL, red / black, unshielded, dust cover and mounting plate.

Modules & Accessories

| | |
|---------|--------------------------------------|
| R813797 | Cable Insert Cat.6A EL, 4-5 mm Cable |
|---------|--------------------------------------|
