

The Superlight Compact floodlight series has been a standard instrument in lighting design ever since its introduction 30 years ago. Over the years the range of floodlights has been expanded and modified for new light sources. The range has now been adapted to make use of the latest generation of very small, high performance LED modules.

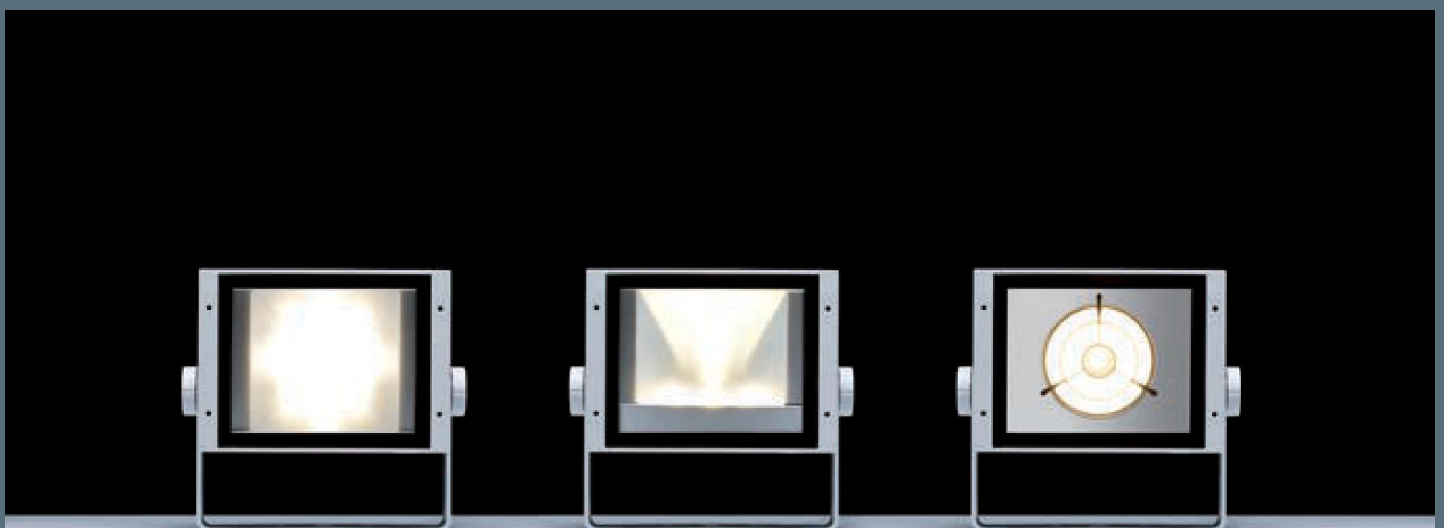
Superlight Compact LED is a compact, high performance floodlight range with all the advantages of the classic series for discharge lamps – various different light distributions and a large selection of accessories.

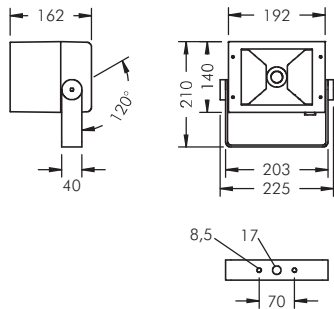
Compact dimensions, a high degree of versatility and timeless design make Superlight Compact LED, also in future, an essential tool for sophisticated exterior lighting projects.





Superlight Compact LED floodlights are available with symmetrical, asymmetrical and rotationally symmetrical reflectors to cover a wide range of lighting tasks. Wide beam flood, narrow beam spot and linear beam distributions can be created using luminaires of one design.





### Superlight Compact LED Axially symmetrical wide beam

With a high performance LED module (Zhaga), integral temperature monitoring device, protection class I, IP65   
windage area AW 0.04 m<sup>2</sup>  
die cast aluminium housing, polyester powder coated, high gloss aluminium reflector, all exterior steel parts are stainless steel, tempered safety glass, silicon gasket, closure with 4 stainless steel screws, mounting bracket powder coated aluminium with tilt scale: 2 drilled holes Ø 8.5 mm, spacing 70 mm, 1 centre hole Ø 17 mm, tilt range 120°, M20 cable gland, integral driver (AC/DC)

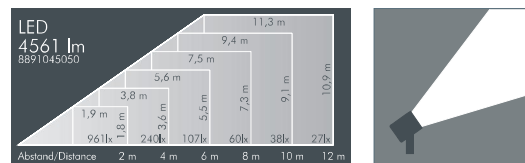
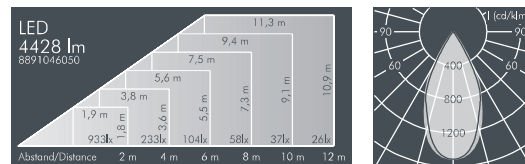
#### Superlight Compact LED, axially symmetrical wide beam

| Part number          | Colour      | Light source        | Weight | Half beam angle $\gamma$ |            |
|----------------------|-------------|---------------------|--------|--------------------------|------------|
|                      |             |                     |        | C 0 – 180                | C 90 – 270 |
| <b>8 891 046 059</b> | black       | 1 x LED module 46 W | 2.6 kg | 49°                      | 50°        |
| <b>8 891 066 059</b> | white       | warm white (3000 K) |        |                          |            |
| <b>8 891 056 059</b> | silver grey |                     |        |                          |            |

| Part number          | Colour      | Light source           | Weight | Half beam angle $\gamma$ |            |
|----------------------|-------------|------------------------|--------|--------------------------|------------|
|                      |             |                        |        | C 0 – 180                | C 90 – 270 |
| <b>8 891 045 059</b> | black       | 1 x LED module 46 W    | 2.6 kg | 49°                      | 50°        |
| <b>8 891 065 059</b> | white       | neutral white (4000 K) |        |                          |            |
| <b>8 891 055 059</b> | silver grey |                        |        |                          |            |

| Part number          | Description                    |
|----------------------|--------------------------------|
| . . . . . <b>1..</b> | <b>Dimmable version (DALI)</b> |

| Part number          | Description  |
|----------------------|--|
| . . . . . <b>4..</b> | <b>Luminaire with 2 cable glands</b><br>for through wiring                         |
| . . . . . <b>5..</b> | <b>Luminaire dimmable version (DALI) with 2 cable glands</b><br>for through wiring |




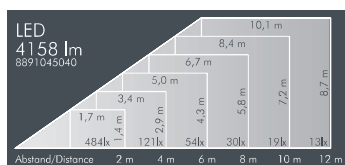
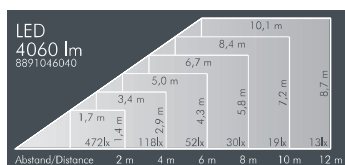
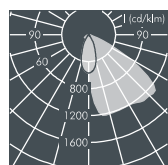
**LED**

LEDs, replacement modules available



## Superlight Compact LED Asymmetrical wide beam

With a high performance LED module (Zhaga),  
integral temperature monitoring device,  
protection class I, IP65   
windage area AW 0.04 m<sup>2</sup>  
die cast aluminium housing, polyester powder  
coated, high gloss aluminium reflector,  
all exterior steel parts are stainless steel,  
tempered safety glass, silicon gasket,  
closure with 4 stainless steel screws,  
mounting bracket powder coated aluminium with  
tilt scale: 2 drilled holes Ø 8.5 mm,  
spacing 70 mm, 1 centre hole Ø 17 mm,  
tilt range 120°, M20 cable gland,  
integral driver (AC/DC)



### Superlight Compact LED, asymmetrical wide beam

| Part number          | Colour      | Light source        | Weight | Main beam angle $\gamma$ |
|----------------------|-------------|---------------------|--------|--------------------------|
| <b>8 891 046 049</b> | black       | 1 x LED module 46 W | 2.6 kg | 48°                      |
| <b>8 891 066 049</b> | white       | warm white (3000 K) |        |                          |
| <b>8 891 056 049</b> | silver grey |                     |        |                          |

| Part number          | Colour      | Light source           | Weight | Main beam angle $\gamma$ |
|----------------------|-------------|------------------------|--------|--------------------------|
| <b>8 891 045 049</b> | black       | 1 x LED module 46 W    | 2.6 kg | 48°                      |
| <b>8 891 065 049</b> | white       | neutral white (4000 K) |        |                          |
| <b>8 891 055 049</b> | silver grey |                        |        |                          |

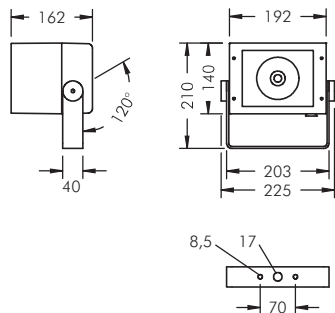
| Part number            | Description                    |
|------------------------|--------------------------------|
| . . . . . <b>1 . .</b> | <b>Dimmable version (DALI)</b> |

| Part number            | Description  |
|------------------------|--|
| . . . . . <b>4 . .</b> | <b>Luminaire with 2 cable glands</b><br>for through wiring                         |
| . . . . . <b>5 . .</b> | <b>Luminaire dimmable version (DALI) with 2 cable glands</b><br>for through wiring |

### LED

LEDs, replacement modules available





### Superlight Compact LED Rotationally symmetrical narrow beam

With a high performance LED module, integral temperature monitoring device, protection class I, IP65 windage area AW 0.04 m<sup>2</sup> die cast aluminium housing, polyester powder coated, high gloss aluminium reflector, all exterior steel parts are stainless steel, tempered safety glass, silicon gasket, closure with 4 stainless steel screws, mounting bracket powder coated aluminium with tilt scale: 2 drilled holes  $\varnothing$  8.5 mm, spacing 70 mm, 1 centre hole  $\varnothing$  17 mm, tilt range 120°, M20 cable gland, integral driver (AC/DC)

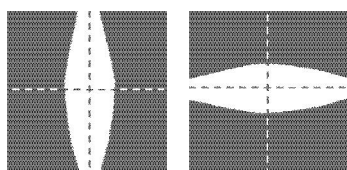
#### Superlight Compact LED, rotationally symmetrical narrow beam

| Part number          | Colour      | Light source        | Weight | Half beam angle $\gamma$ |
|----------------------|-------------|---------------------|--------|--------------------------|
|                      |             |                     |        | C 0 – 180                |
| <b>8 890 046 019</b> | black       | 1 x LED module 48 W | 2.6 kg | 11°                      |
| <b>8 890 066 019</b> | white       | warm white (3000 K) |        |                          |
| <b>8 890 056 019</b> | silver grey |                     |        |                          |

| Part number          | Colour      | Light source           | Weight | Half beam angle $\gamma$ |
|----------------------|-------------|------------------------|--------|--------------------------|
|                      |             |                        |        | C 0 – 180                |
| <b>8 890 045 019</b> | black       | 1 x LED module 48 W    | 2.6 kg | 11°                      |
| <b>8 890 065 019</b> | white       | neutral white (4000 K) |        |                          |
| <b>8 890 055 019</b> | silver grey |                        |        |                          |

#### Superlight Compact LED, rotationally symmetrical narrow beam

| Part number     | Beam direction | Description                         | Half beam angle $\gamma$ |            |
|-----------------|----------------|-------------------------------------|--------------------------|------------|
|                 |                |                                     | C 0 – 180                | C 90 – 270 |
| ..... <b>2.</b> | vertical       | <b>Floodlight with ribbed glass</b> | 54°                      | 11°        |
| ..... <b>3.</b> | horizontal     | for linear beam control             | 11°                      | 54°        |

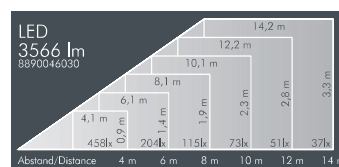
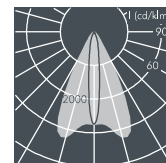
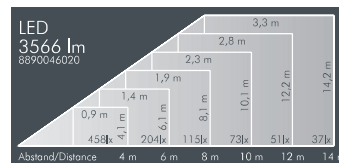
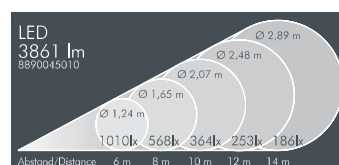
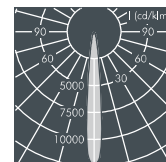
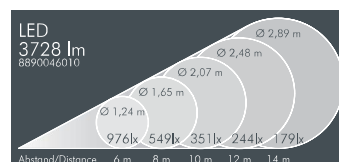


| Part number      | Description                    |
|------------------|--------------------------------|
| ..... <b>1..</b> | <b>Dimmable version (DALI)</b> |

| Part number      | Description  |
|------------------|--|
| ..... <b>4..</b> | <b>Luminaire with 2 cable glands</b><br>for through wiring                         |
| ..... <b>5..</b> | <b>Luminaire dimmable version (DALI) with 2 cable glands</b><br>for through wiring |

#### Accessories Superlight Compact LED, rotationally symmetrical narrow beam/medium wide beam

| Part number          | Description   |
|----------------------|---|
| <b>128 0 827 940</b> | <b>Radial louvre,</b><br>internally fitted, to reduce glare and scattered light |





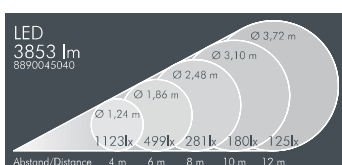
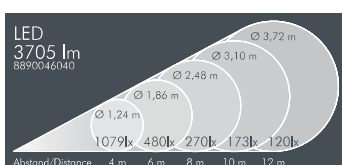
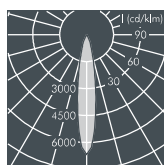
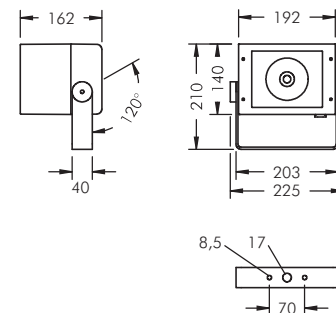
#### LED

LEDs, replacement modules available



## Superlight Compact LED Rotationally symmetrical medium wide beam

With a high performance LED module,  
integral temperature monitoring device,  
protection class I, IP65    
windage area AW 0.04 m<sup>2</sup>  
die cast aluminium housing, polyester powder  
coated, high gloss aluminium reflector,  
all exterior steel parts are stainless steel,  
tempered safety glass, silicon gasket,  
closure with 4 stainless steel screws,  
mounting bracket powder coated aluminium with  
tilt scale: 2 drilled holes  $\varnothing$  8.5 mm,  
spacing 70 mm, 1 centre hole  $\varnothing$  17 mm,  
tilt range 120°, M20 cable gland,  
integral driver (AC/DC)



### Superlight Compact LED, rotationally symmetrical medium wide beam

| Part number          | Colour      | Light source                               | Weight | Half beam angle $\gamma$ |
|----------------------|-------------|--|--------|--------------------------|
| <b>8 890 046 049</b> | black       | 1 x LED module 48 W<br>warm white (3000 K) | 2.6 kg | C 0 – 180<br>18°         |
| <b>8 890 066 049</b> | white       |  |        |                          |
| <b>8 890 056 049</b> | silver grey |  |        |                          |

| Part number          | Colour      | Light source                                  | Weight | Half beam angle $\gamma$ |
|----------------------|-------------|---|--------|--------------------------|
| <b>8 890 045 049</b> | black       | 1 x LED module 48 W<br>neutral white (4000 K) | 2.6 kg | C 0 – 180<br>18°         |
| <b>8 890 065 049</b> | white       |   |        |                          |
| <b>8 890 055 049</b> | silver grey |   |        |                          |

| Part number     | Description                    |
|-----------------|--------------------------------|
| <b>... 1 ..</b> | <b>Dimmable version (DALI)</b> |

| Part number     | Description  |
|-----------------|--|
| <b>... 4 ..</b> | <b>Luminaire with 2 cable glands</b><br>for through wiring                         |
| <b>... 5 ..</b> | <b>Luminaire dimmable version (DALI) with 2 cable glands</b><br>for through wiring |

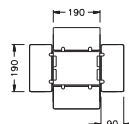
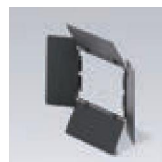
### LED

LEDs, replacement modules available

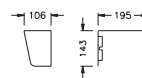


**Accessories for Superlight Compact LED**

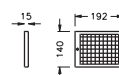
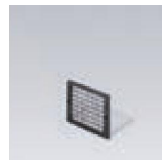
| Part number          | Colour      | Description   |
|----------------------|-------------|---|
| <b>128 0 035 940</b> | black       | <b>Barn doors*</b> , aluminium, to avoid glare from 4 directions, variable control of light distribution, for mounting on front of floodlight |
| <b>128 0 035 960</b> | white       |   |
| <b>128 0 035 950</b> | silver grey |   |



| Part number          | Colour      | Description   |
|----------------------|-------------|---|
| <b>128 0 031 940</b> | black       | <b>Cowl*</b> , stainless steel, to avoid glare from 3 directions, for mounting on front of floodlight |
| <b>128 0 031 960</b> | white       |   |
| <b>128 0 031 950</b> | silver grey |   |

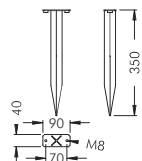


| Part number          | Colour      | Description  |
|----------------------|-------------|--|
| <b>128 0 352 940</b> | black       | <b>Protection grill*</b> , stainless steel, c/w aluminium frame, to protect the glass from stone chip and vandalism, for mounting on front of floodlight |
| <b>128 0 352 960</b> | white       |  |
| <b>128 0 352 950</b> | silver grey |  |

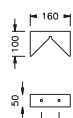


\*For retro-fitting. Only one accessory per luminaire, not in combination

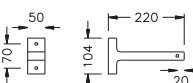
| Part number          | Colour      | Description   |
|----------------------|-------------|---|
| <b>129 0 390 940</b> | black       | <b>Earth spike</b> , stainless steel, for use in landscaped areas |
| <b>129 0 390 960</b> | white       |   |
| <b>129 0 390 950</b> | silver grey |   |



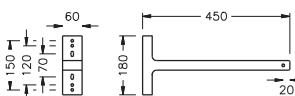
| Part number          | Colour      | Description  |
|----------------------|-------------|--|
| <b>125 0 197 940</b> | black       | <b>Corner fixing bracket A</b> , aluminium, polyester powder coated, for mounting floodlights on 90° corners |
| <b>125 0 197 960</b> | white       |  |
| <b>125 0 197 950</b> | silver grey |  |



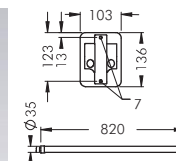
| Part number          | Colour      | Description   |
|----------------------|-------------|---|
| <b>125 0 160 940</b> | black       | <b>Wall bracket 220 mm</b> , aluminium, polyester powder coated, allows horizontal adjustment and directional aiming of luminaire |
| <b>125 0 160 960</b> | white       |   |
| <b>125 0 160 950</b> | silver grey |   |



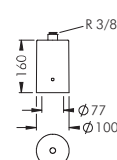
| Part number          | Colour      | Description   |
|----------------------|-------------|---|
| <b>128 0 294 940</b> | black       | <b>Wall bracket 450 mm</b> , aluminium, polyester powder coated, allows horizontal adjustment and directional aiming of luminaire |
| <b>128 0 294 960</b> | white       |   |
| <b>128 0 294 950</b> | silver grey |   |



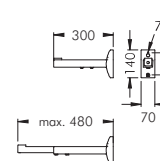
| Part number          | Colour      | Description  |
|----------------------|-------------|--|
| <b>128 0 801 940</b> | black       | <b>Wall arm 820 mm</b> , aluminium, polyester powder coated, for illumination of signs and facades, cable duct inside, max. load 6 kgs |
| <b>128 0 801 960</b> | white       |  |
| <b>128 0 801 950</b> | silver grey |  |



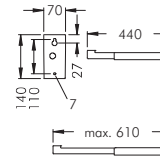
| Part number          | Colour      | Description  |
|----------------------|-------------|--|
| <b>128 0 625 940</b> | black       | <b>Pole top fitter</b> , aluminium, for pole Ø 76 mm, with R3/8" thread, for mounting one floodlight |
| <b>128 0 625 960</b> | white       |  |
| <b>128 0 625 950</b> | silver grey |  |

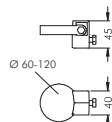


| Part number          | Colour      | Description                              |
|----------------------|-------------|--|
| <b>128 0 700 940</b> | black       | <b>Telescopic wall arm, 300 - 480 mm</b> |
| <b>128 0 700 960</b> | white       |  |
| <b>128 0 700 950</b> | silver grey |  |



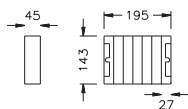
| Part number          | Colour      | Description                              |
|----------------------|-------------|--|
| <b>128 0 730 940</b> | black       | <b>Telescopic wall arm, 440 - 610 mm</b> |
| <b>128 0 730 960</b> | white       |  |
| <b>128 0 730 950</b> | silver grey |  |



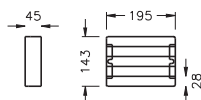


#### Accessories Superlight Compact LED

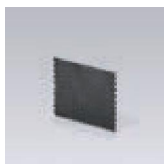
| Part number          | Colour      | Description  |
|----------------------|-------------|--|
| <b>128 0 760 940</b> | black       | <b>Pole clamp</b> , aluminium, polyester powder coated, stainless steel strap, for mounting on poles $\varnothing$ 60 – 120 mm |
| <b>128 0 760 960</b> | white       |  |
| <b>128 0 760 950</b> | silver grey |  |



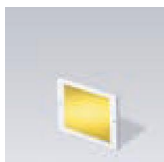
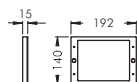
| Part number          | Colour      | Description   |
|----------------------|-------------|---|
| <b>128 0 033 940</b> | black       | <b>Vertical louvre*</b> , stainless steel, to reduce lateral glare, for mounting on front of floodlight |
| <b>128 0 033 960</b> | white       |   |
| <b>128 0 033 950</b> | silver grey |   |



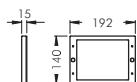
| Part number          | Colour      | Description   |
|----------------------|-------------|---|
| <b>128 0 368 940</b> | black       | <b>Horizontal louvre*</b> , stainless steel, to reduce lateral glare, for mounting on front of floodlight |
| <b>128 0 368 960</b> | white       |   |
| <b>128 0 368 950</b> | silver grey |   |



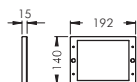
| Part number          | Description   |
|----------------------|---|
| <b>128 0 813 000</b> | <b>Honeycomb louvre</b> , internally fitted, to avoid glare |



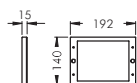
| Part number          | Colour            | Description                                      |
|----------------------|-------------------|--|
| <b>128 0 403 940</b> | black frame       | <b>Yellow colour filter*</b> c/w aluminium frame |
| <b>128 0 403 960</b> | white frame       |  |
| <b>128 0 403 950</b> | silver grey frame |  |



| Part number          | Colour            | Description                                   |
|----------------------|-------------------|---|
| <b>128 0 393 940</b> | black frame       | <b>Red colour filter*</b> c/w aluminium frame |
| <b>128 0 393 960</b> | white frame       |   |
| <b>128 0 393 950</b> | silver grey frame |   |

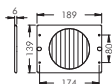


| Part number          | Colour            | Description                                    |
|----------------------|-------------------|--|
| <b>128 0 383 940</b> | black frame       | <b>Blue colour filter*</b> c/w aluminium frame |
| <b>128 0 383 960</b> | white frame       |  |
| <b>128 0 383 950</b> | silver grey frame |  |



| Part number          | Colour            | Description                                     |
|----------------------|-------------------|---|
| <b>128 0 418 940</b> | black frame       | <b>Green colour filter*</b> c/w aluminium frame |
| <b>128 0 418 960</b> | white frame       |   |
| <b>128 0 418 950</b> | silver grey frame |   |

\* For retro-fitting. Only one accessory per luminaire, not in combination, also suitable for floodlights with linear beam spread.



#### Accessories Superlight Compact LED, rotationally symmetrical narrow beam

| Part number          | Colour      | Description  |
|----------------------|-------------|--|
| <b>128 0 622 940</b> | black       | <b>Rotatable ribbed glass spreader lens</b> , for linear beam distribution, continuously adjustable through 360°, with stainless steel frame |
| <b>128 0 622 960</b> | white       |  |
| <b>128 0 622 950</b> | silver grey |  |



#### Accessories Superlight Compact LED, rotationally symmetrical narrow beam and medium wide beam

| Part number          | Description   |
|----------------------|---|
| <b>128 0 827 940</b> | <b>Radial louvre</b> , internally fitted, to reduce glare and scattered light |