

MONTAGEANWEISUNG

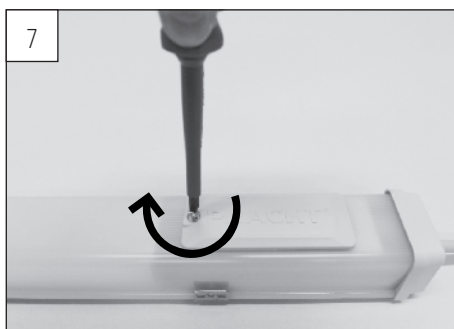
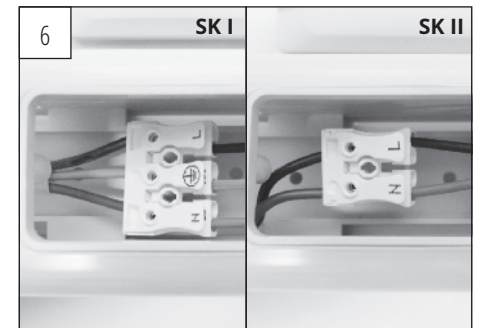
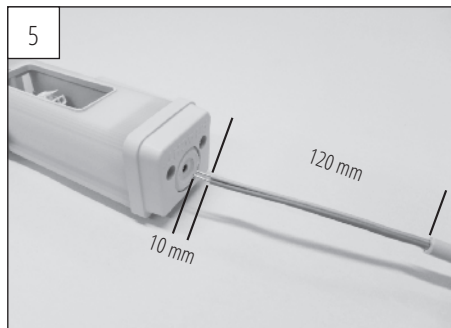
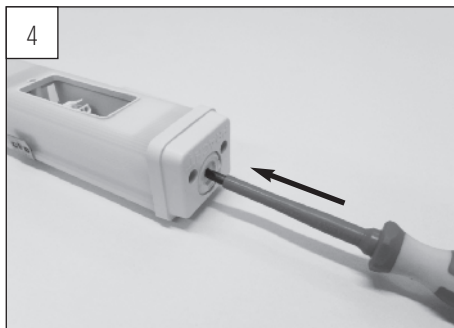
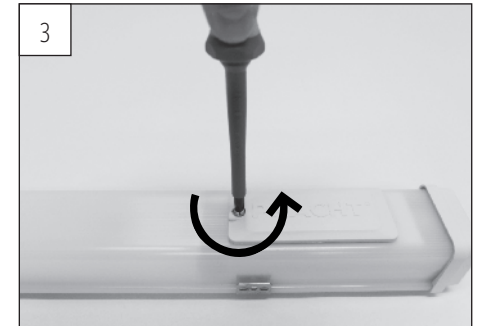
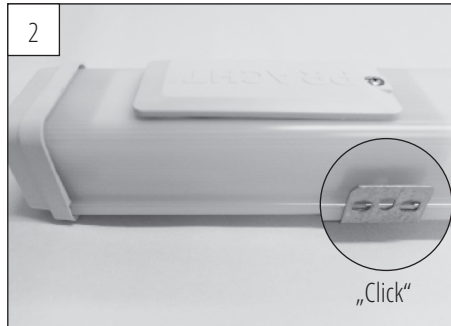
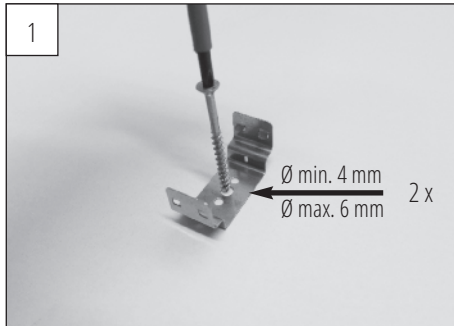
INSTRUCTION OF ASSEMBLY

KATLA LED PPCO (I) 20xy/..

PRACHT®

Zertifiziert nach DIN ISO 9001

Alfred Pracht Lichttechnik GmbH | Pracht Leuchten GmbH
Am Seerain 3, 35232 Dautphetal-Buchenau, Germany
Tel. +49 6466 9140-0, Fax +49 6466 9140-444
info@pracht.com, www.praecht.com



WICHTIGE HINWEISE:

Austausch des LED-Modul nur im Werk möglich!

IMPORTANT INFORMATION:

Replacement of the LED module can only be performed in factory!



Zur Verwendung in einer Umgebung in der eine Ablagerung von leitfähigem Staub auf der Leuchte erwartet werden kann.

This luminaire is useable in an environment that is expected to deposit conductive dust.

MONTAGEARTEN: Decken-, Pendel-, waagerechte Wandmontage.

INSTALLATION: Ceiling, pendant, horizontal wall mounting.

Art.-Nr. 0719979