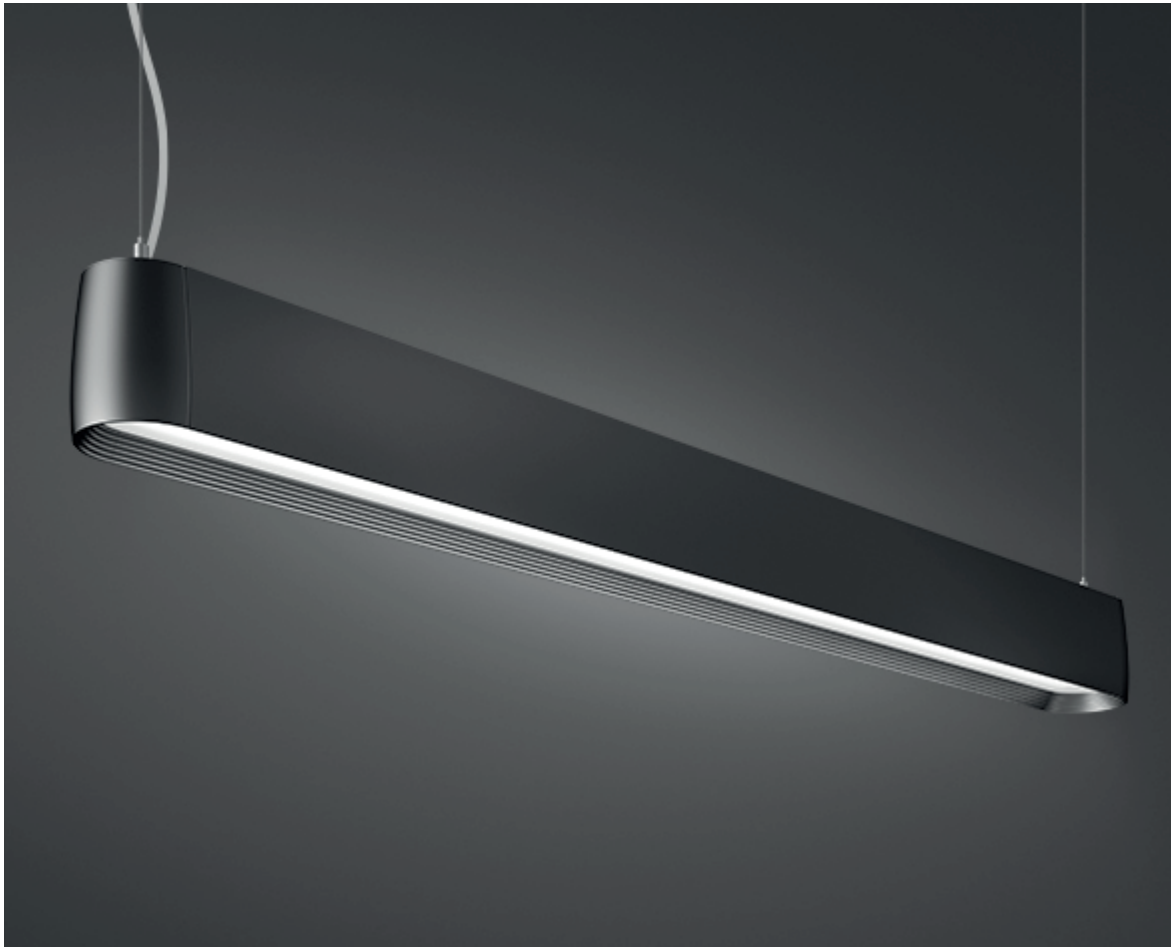


Pelée Line

Design: Cubo Architects



PELÉE LINE is the latest news in the Pelée family - now consisting of recessed, surface-mounted, suspended, and downlight luminaires. They are characterised by the concentric inner circles, diffusing light in a pleasant and non-glaring way.

PELÉE LINE is available up to 6 meter in length. Standard lengths are 1200, 1800, 2350, and 2900 mm. The luminaires are equipped with two LED channels for light up and downwards. The downward shade is prismatic, the upward opalised. The uplight in the full length of the luminaire is a spectacular supplement to the downward light.

Four options as to the direction of light:

100% downwards

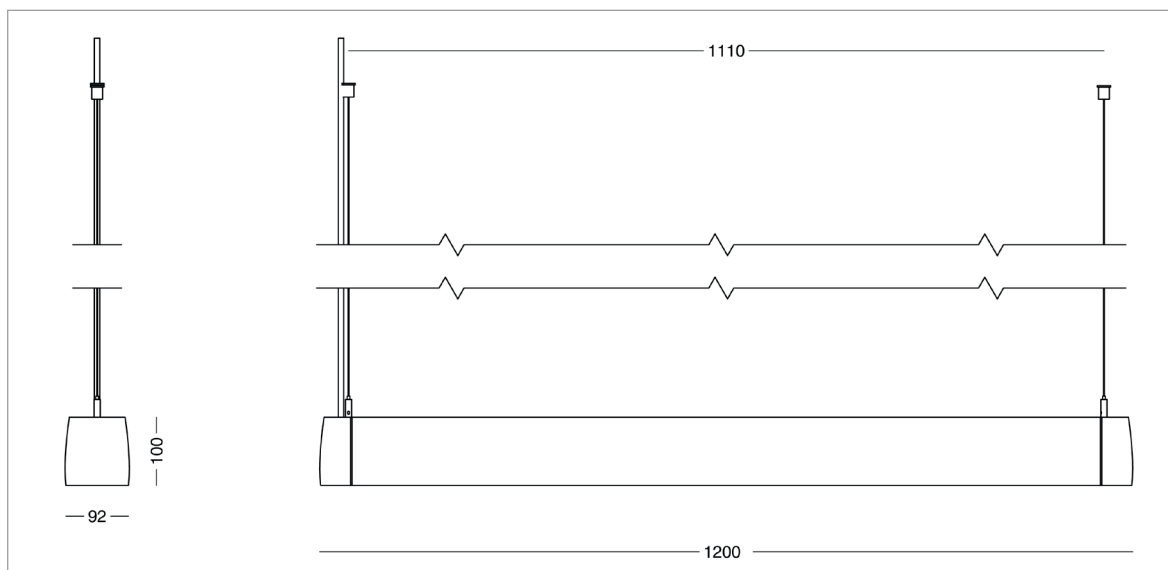
35% upwards, 65% downwards

50% upwards, 50% downwards

65% upwards, 35% downwards

Pelée Line - 1200

Design: Cubo Architects



Luminaire

Material: aluminium, coated white, black, silver grey, or corten brown

Shades: prismatic acrylate (downwards)
opal-white acrylate (upwards)

Lead: 3 m white PKLJ

Suspension: 2 x 2 m steel wire, 1.2 mm

Classification: IP20, class I

Weight: ca. 5 kg

Lamp type: LED

LED and driver

LED: strips

Consumption:

100% downlight: 42 W

Other variants: 58 W

Operational life: 50,000 hours, L80B10

Luminous power:

100% downlight: max 4000 lm

Other variants: max 6000 lm

Colour temperature: 2700, 3000, or 4000 Kelvin

Colour rendering: min 90 Ra

Colour accuracy: 3 steps SDCM

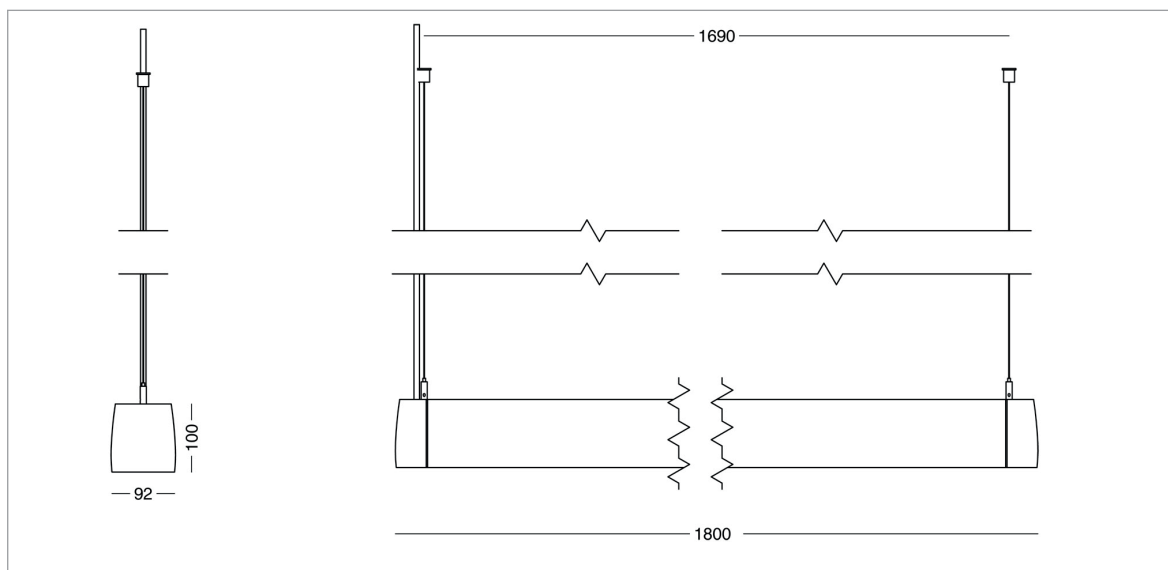
Driver: Dali control

Product codes:

PELÉE Line 1200							
Item No.	Lamp type			Select colour, colour temperature, and dimming in the table below.			
5109-	2000 lm, downwards						
5101-	3000 lm, downwards						
5102-	4000 lm, downwards						
5103-	5000 lm, up and downwards in a 35/65 ratio						
5104-	6000 lm, up and downwards in a 35/65 ratio						
5105-	4000 lm, up and downwards in a 50/50 ratio						
5106-	6000 lm, up and downwards in a 50/50 ratio						
5107-	5000 lm, up and downwards in a 65/35 ratio						
5108-	6000 lm, up and downwards in a 65/35 ratio						
To be combined with:	Coating		Shade		Colour temperature		
	1	white	M	micro prismatic	927*	2700 K, 90 Ra	* Longer lead times
	9	silver grey			930	3000 K, 90 Ra	
	17	corten brown			940	4000 K, 90 Ra	
	66	black noir 900					
Example order code:	5103-1M930 = Pelée Line 1200, 5000 lm, 35/65, white, 3000 K 90 Ra, Dali						

Pelée Line - 1800

Design: Cubo Architects



Luminaire

Material: aluminium, coated white, black, silver grey, or corten brown

Shades: prismatic acrylate (downwards)
opal-white acrylate (upwards)

Lead: 3 m white PKLJ

Suspension: 2 x 2 m steel wire, 1.2 mm

Classification: IP20, class I

Weight: ca. 7 kg

Lamp type: LED

LED and driver

LED: strips

Consumption:

100% downlight: 56 W

Other variants: 84 W

Operational life: 50,000 hours, L80B10

Luminous power:

100% downlight: max 6000 lm

Other variants: max 69000 lm

Colour temperature: 2700, 3000, or 4000 Kelvin

Colour rendering: min 90 Ra

Colour accuracy: 3 steps SDCM

Driver: Dali control

Product codes:

PELÉE Line 1800							
Item No.	Lamp type		Select colour, colour temperature, and dimming in the table below.				
5801-	3000 lm, downwards						
5802-	4500 lm, downwards						
5803-	6000 lm, downwards						
5804-	7500 lm, up and downwards in a 35/65 ratio						
5805-	9000 lm, up and downwards in a 35/65 ratio						
5806-	6000 lm, up and downwards in a 50/50 ratio						
5807-	9000 lm, up and downwards in a 50/50 ratio						
5808-	7500 lm, up and downwards in a 65/35 ratio						
5809-	9000 lm, up and downwards in a 65/35 ratio						
To be combined with:	Coating		Shade		Colour temperature		
	1	white	M	micro prismatic	927*	2700 K, 90 Ra	* Longer lead times
	9	silver grey			930	3000 K, 90 Ra	
	17	corten brown			940	4000 K, 90 Ra	
	66	black noir 900					
Example order code:	5804-66M930 = Pelée Line 1800. 7500 lm. 35/65. black noir 900. 3000 K 90 Ra. Dali						