



X-LINE SLIM UP&DOWN LED

Surface mounted luminaires



The luminaire is made of aluminum profile. Its characteristic feature is the light distribution in the upper and lower half-space. Comparing to the traditional X-Line LED, size of the luminaire has been reduced, and all construction has been closed in a narrow 45 mm profile, which gives now a more elegant form of the product. The X-Line Slim uses a PC and Micro-PRM opal diffuser (intended only for the lower beam). All of this allows to manipulate light and create lighting systems, facilitating the creation of comfortable vision in the interiors and their aesthetic appearance. The X-Line Slim luminaire is designed for mounting on suspensions.

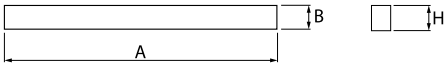
Pictograms:



Main parameters:

Name	Luminous flux LED [lm]	Power of luminaire [W]	Color [K]	Dimensions A x B x H [mm]
X-LINE SLIM UP&DOWN LED 2200/4400	6966	42	4000	1138 x 48 x 70
X-LINE SLIM UP&DOWN LED 3300/6600	10449	63	4000	1700 x 48 x 70
X-LINE SLIM UP&DOWN LED 4400/4400	9288	56	4000	1138 x 48 x 70
X-LINE SLIM UP&DOWN LED 4400/8800	13932	84	4000	2260 x 48 x 70
X-LINE SLIM UP&DOWN LED 6600/6600	13932	84	4000	1700 x 48 x 70
X-LINE SLIM UP&DOWN LED 8800/8800	18576	112	4000	2260 x 48 x 70

Technical drawing:



Light and electrical features:

Light source	LED
Voltage	220..240 V, 50..60 Hz
Lifetime of LED sources [h]	60000
Lx/By	L80/B10
CRI	>80
SDCM	3
Operating temperature range [°C]	5 ÷ 30
Driver	DIM DALI (EDD) standard (E) *

* Variant to specify when ordering

Mechanical features:

Material	aluminum
Color	anodised aluminum
Diffuser	PC/Micro-PRM (opallescent polycarbonate)/(micro-prismatic diffuser PMMA) [up/down]

Additional information:

See next page of this data sheet to check possible modifications.

Note: The power shown refers to the whole system (tolerance +/- 10%).
The given luminous flux refers to LED light sources (tolerance +/- 10% depends on the value of the colour temperature).
Specifications are subject to change. Pictures of the luminaires may differ from reality.
Date of last update: 13.12.2019

Dodatkowe informacje / Additional information / Zusätzliche Informationen:

Przykładowe modyfikacje* / Examples of modifications* / Beispiele der Modifikationen*

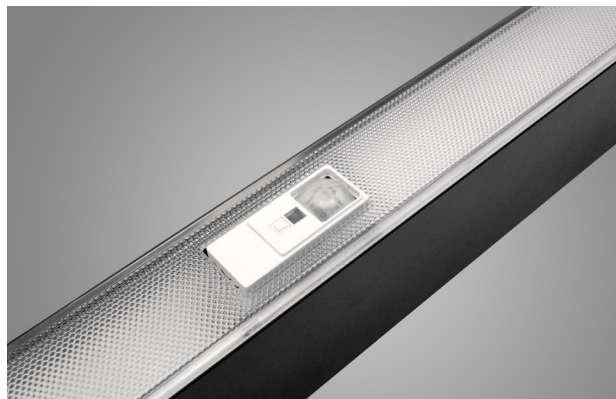
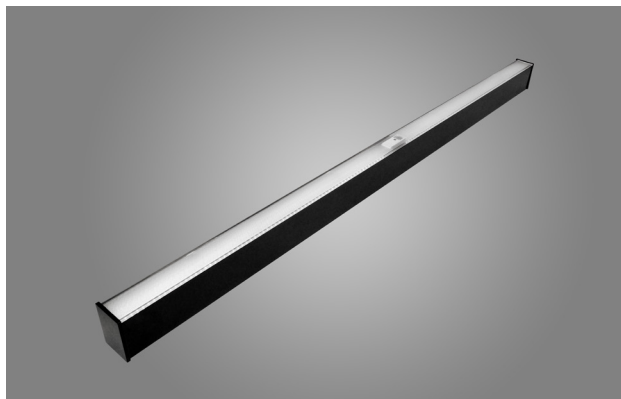
* - UWAGA!!!
Poniższe rozwiązania nie są dostępne w tych samych wersjach rozmiarowych i mocowych co podstawowa wersja produktu.
Dane mechaniczne oraz elektryczne mogą się różnić. Możliwość zamówienia tylko po indywidualnych uzgodnieniach.

* - WARNING!
The following solutions are not available in the same size and power versions as the basic version of the product.
Mechanical and electrical data may be different. Possibility to order only after individual contact.

* - ACHTUNG!!!
Die nachfolgenden Lösungen sind nicht in der gleichen Größe und mit der gleichen Leistung wie die Basisversion des Produkts erhältlich. Mechanische und elektrische Parameter können davon abweichen. Nur nach individueller Abstimmung lieferbar.

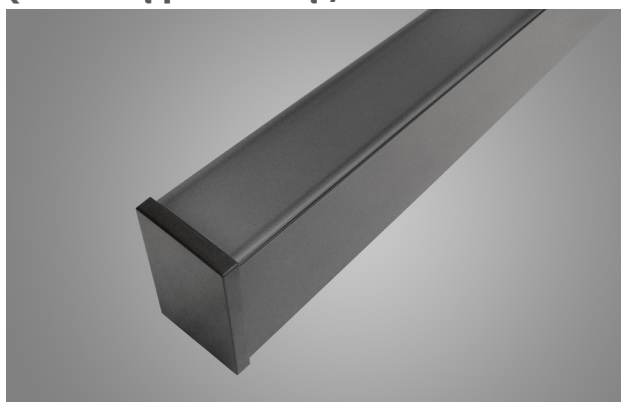
X-Line Slim LED

(z czujnikiem natężenia światła i obecności / with light and presence sensor / mit einem Lichtstärke- und Anwesenheitssensor)



X-Line Slim LED black PLX

(z czarną przesłoną / with black diffuser / mit schwarzer Blende)



X-Line Slim LED

(z rastrem Low UGR / with Low UGR louver / mit einem Raster Low UGR)

