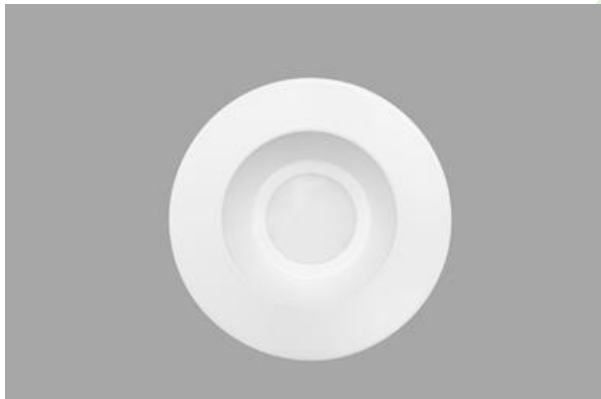


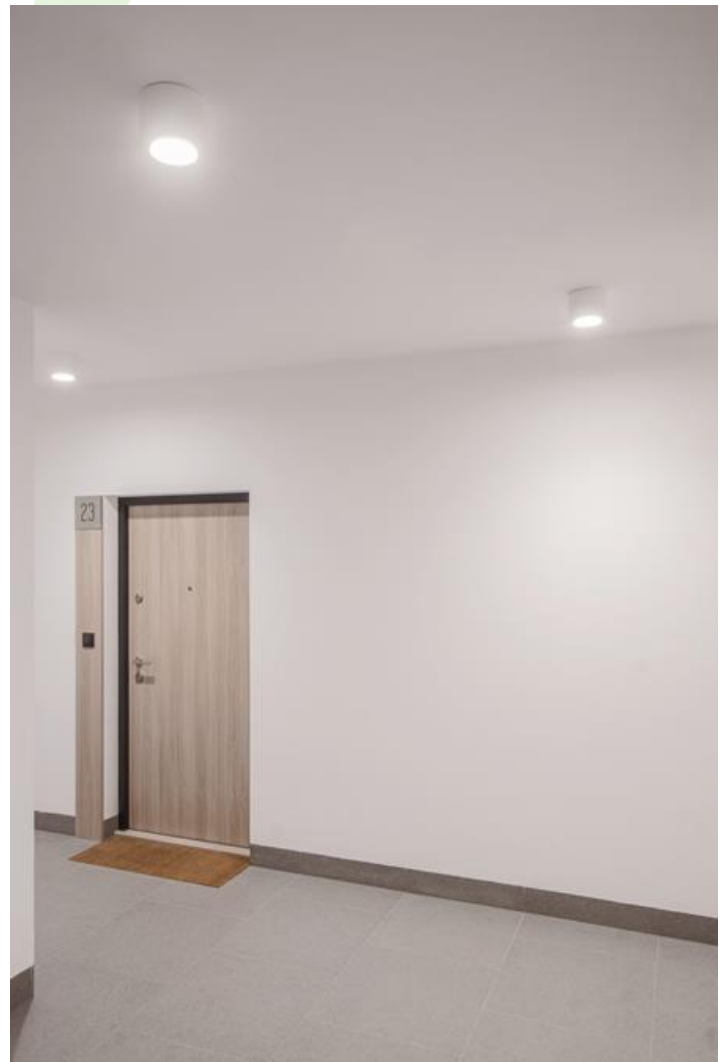


BERYL N NEW LED O

Surface mounted luminaires



Downlight surface mounted luminaire made of cast aluminum. Luminaire is dedicated for prestigious interiors such as hotels, banks and offices of higher standard. Owing to the newest components and renowned producers of LEDs applied it was possible to build such luminaires which save energy consumption comparing with traditional solutions.



"Metamorfoza Ursus" residential, Warsaw

Pictograms:



Main parameters:

Name	Luminous flux LED [lm]	Power of luminaire [W]	Color [K]	Dimensions D x H [mm]
BERYL N NEW LED O-1 1800	1810 / 1864	14	3000 / 4000	Ø135 x 136
BERYL N NEW LED O-1 1800 IP44	1864 / 1810	14	4000 / 3000	Ø149 x 151
BERYL N NEW LED O-2 2800	2726 / 2807	20	3000 / 4000	Ø185 x 156
BERYL N NEW LED O-2 2800 IP44	2807	20	4000	Ø185 x 175
BERYL N NEW LED O-2 3600	3907 / 3794	27	4000 / 3000	Ø185 x 156
BERYL N NEW LED O-2 3600 IP44	3794 / 3907	27	3000 / 4000	Ø185 x 175
BERYL N NEW LED O-3 5400 IP44	6178 / 6000	41	4000 / 3000	Ø215 x 182

Technical drawing:



Light and electrical features:

Light source	LED
Voltage	220..240 V, 50..60 Hz
Lifetime of LED sources [h]	83000/84000
Lx/By	L90/B10
CRI	85/80
SDCM	2
Photobiological risk class	RG0
Operating temperature range [°C]	5 ÷ 30
Driver	standard (E) DIM DALI (EDD) *

* Variant to specify when ordering

Mechanical features:

Material	aluminum
Color	RAL 9016 (white)
Diffuser	transparent PMMA Micro-PRM (micro-prismatic diffuser PMMA) PLX (PMMA opal) transparent glass SHM (hardened mat glass)

Note: The power shown refers to the whole system (tolerance +/- 10%).

Specifications are subject to change. Pictures of the luminaires may differ from reality.
Date of last update: 13-03-2020