

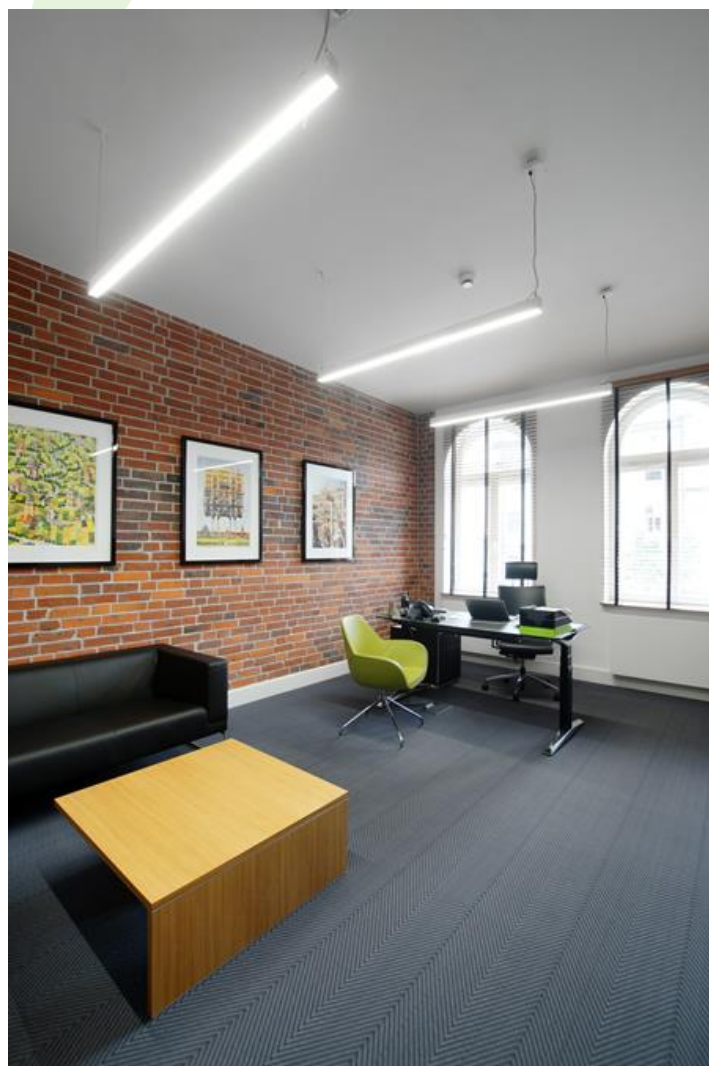


## ESSENCE LED

### Surface mounted luminaires



Luminary made from aluminum profile adapted to be mounted on suspensions, or directly on a solid ceiling construction. Its body made from anodized aluminum profil. There are two colors available: white (RAL9016) or grey (RAL9006). Its diffuser is made from white polymethyl methacrylate. Luminary to be used in offices, conference halls, all structures of public sectors.



Domena.pl offices, Bydgoszcz

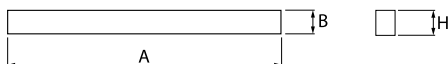
## Pictograms:



## Main parameters:

Name	Luminous flux LED [lm]	Power of luminaire [W]	Color [K]	Dimensions A x B x H [mm]
ESSENCE LED 2600	2698 / 2840	17	3000 / 4000	1134 x 36 x 63
ESSENCE LED 3300	3309 / 3483	21	3000 / 4000	854 x 36 x 63
ESSENCE LED 3900	4047 / 4260	26	3000 / 4000	1694 x 36 x 63
ESSENCE LED 4400	4410 / 4644	28	3000 / 4000	1134 x 36 x 63
ESSENCE LED 5500	5515 / 5805	35	3000 / 4000	1414 x 36 x 63
ESSENCE LED 6600	6615 / 6966	42	3000 / 4000	1694 x 36 x 63

## Technical drawing:



## Light and electrical features:

Light source	LED
Voltage	220..240 V, 50..60 Hz
Lifetime of LED sources [h]	100000 (1) / 147000 (2)
Lx/By	L80/B10 (1) / L70/B50 (2)
CRI	>80
SDCM	3
Photobiological risk class	RG0
Operating temperature range [°C]	5 ÷ 30
Driver	standard (E) DIM DALI (EDD) *

\* Variant to specify when ordering

## Mechanical features:

Material	aluminum
Color	RAL 9006 (gray) RAL 9010 (white) *
Diffuser	PLX (PMMA opal)

Note: The power shown refers to the whole system (tolerance +/- 10%).

Specifications are subject to change. Pictures of the luminaires may differ from reality.  
Date of last update: 13-03-2020