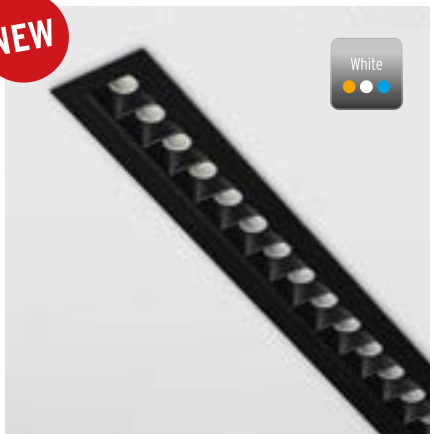


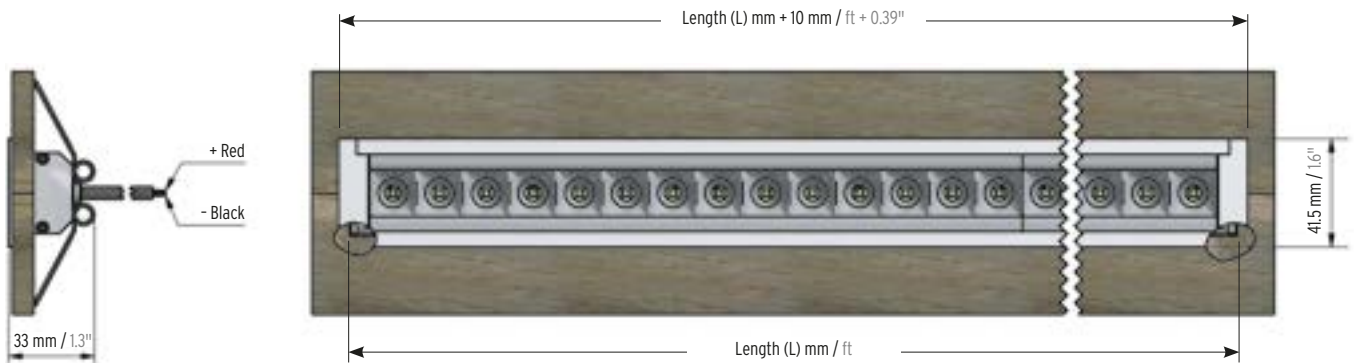
MARS NANO CV White Recessed IP40

NEW


24 V slim linear LED invisible downlight luminaire in IP40 with optimal glare control available as recessed with a remarkable low depth of installation of 33 mm (1.3") or surface-mounted & pendant version in a robust 42 mm x 62 mm (1.65" x 2.44") housing. Extruded and anodized aluminum casing profiles and magnetic aluminum end caps (for surface and pendant) available in silver, black or white colors. Easy tool free recessed installation with pre-mounted springs. Delivered with 2 m (6.56') open end black cable. Nanometric lenses optics technology enabling accurate 15°, 25°, 40° or 65° beam angle gaussian lighting distribution. Antiglare optics available in black or white offering a UGR as low as < 13 for an optimal visual comfort. Light source assembled using state of the art automated Reel to Reel (R2R) production process supporting LED Linear™ Tj Away® thin flexible circuit board technology. In combination with CSP LED packages a thermal

resistivity of 5.3 K/W is achieved for an optimal heat dissipation (junction to profile) which guarantees an outstanding lifetime of > 60,000 hrs L80/B10. Embeds high quality CSP LEDs with 3 step MacAdams (SDCM3) binning centered on target CCT (One Bin Only) with an extended photometric code of Wxxx/339 ensuring an exceptional color consistency over the rated lifetime. Premium color rendition with a CRI of 95 and TM-30-15 up to $R_f = 95 / R_g = 100$ ensuring a remarkable light quality. Consistent light intensity all along the luminaire length is obtained thanks to active current regulation operated by dedicated integrated circuits (ICs) on each step. Protected against electrostatic discharge $\pm 2,000$ V and polarity miswiring. Fully PWM dimmable for frequency > 0 kHz up to 2 kHz (flicker free for frequency higher then 1.2 kHz according to IEEE P1789 standard). Engineered and produced in Germany.

Dimensions & available lengths



Fixture build to length (not field cuttable):

L_{min} : 139 mm; L_{max} : 4,014 mm (LD25: 3,014 mm/LD40: 2,014 mm); in 125 mm increments
 L_{min} : 5.47"; L_{max} : 13.17" (LD25: 9.89"/LD40: 6.61"); in 4.92" increments

Electrical & output data

Voltage	24 Volt (23 V_{min} , 25 V_{max})
Temperature ⁸	$T_{Cmin} = -25^{\circ}C / -13^{\circ}F$, $T_{Cmax} = \text{specific, see Table below}$
Storage temperature	$T_{Smin} = -30^{\circ}C / -22^{\circ}F$, $T_{Smax} = 85^{\circ}C / 185^{\circ}F$
Ambient temperature	$T_{amin} = -25^{\circ}C / -13^{\circ}F$, $T_{amax} = \text{specific, see Table below}$

MARS NANO CV	LD5	LD10	LD15	LD25	LD40
Power (W/m / W/ft) ^a	5 / 1.5	10 / 3.1	15 / 4.6	25 / 7.6	40 / 12.2
Efficacy (lm/W) ^a @W 850	104	98	105	104	90
max. length (m / ft)	4 / 13.1	4 / 13.1	4 / 13.1	3 / 9.8	2 / 6.6
CRI / R9	95 / 65	95 / 65	95 / 65	95 / 65	95 / 65
Temperature Tc-point(T_{Cmax}) ²	60°C / 140°F	60°C / 140°F	60°C / 140°F	65°C / 149°F	75°C / 167°F
max. Ambient temperature (T_{amax})	50°C / 122°F	50°C / 122°F	50°C / 122°F	45°C / 113°F	35°C / 95°F



Lifetime



LM 79 compliant



Photometric code



LM 80 compliant

Color temperature		lumen/meter (lm/m) ^a lumen/feet (lm/ft) ^a @ 15° Optics ^c				
		LD5	LD10	LD15	LD25	LD40
● W822	2,200 K	380 / 120	740 / 230	1,160 / 350	1,910 / 580	2,650 / 810
● W927	2,700 K	400 / 120	780 / 240	1,230 / 370	2,030 / 620	2,810 / 860
● W930	3,000 K	410 / 120	800 / 240	1,280 / 390	2,100 / 640	2,910 / 890
● W935	3,500 K	420 / 130	820 / 250	1,290 / 390	2,140 / 650	2,960 / 900
● W940	4,000 K	440 / 130	840 / 260	1,340 / 410	2,210 / 670	3,050 / 930
● W850	5,000 K	500 / 150	940 / 290	1,570 / 480	2,600 / 790	3,590 / 1,090

^aThe given data are typical values. Due to tolerances of the production process and the electrical components, values for light output and electrical power can vary up to 10%.

⁸The Tc-point should be measured in thermal equilibrium according to IEC EN 60598-1.

^c25°, 40° and 65° reflectors -5% lumen/m.

Please click here to configure your fixture online

Order code

MARS NANO CV White Recessed IP40

Your order code	MARS NANO CV	LD__	W__	__	__	R__	IP40
Order code example	MARS NANO CV	LD15	W930	1264	BB	R 65	IP40

LED tape

NEXUS LD5	LD5
NEXUS LD10	LD10
NEXUS LD15	LD15
NEXUS LD25	LD25
NEXUS LD40	LD40

Color temperature

2,200 K (W822)	822
2,700 K (W927)	927
3,000 K (W930)	930
3,500 K (W935)	935
4,000 K (W940)	940
5,000 K (W850)	850

Length

L_{min}: 139 mm (5.47");
 L_{max}: 4,014 mm (13.17"); LD25: 3,014 mm (9.89");
 LD40: 2,014 mm (6.61");
 in 125 mm (4.92") increments

Color

Black profile with black glare reduction	BB
Silver profile with black glare reduction	SB
White profile with white glare reduction	WW
White profile with black glare reduction	WB

Mounting

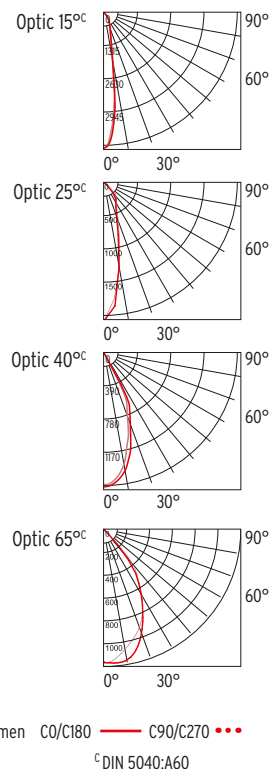
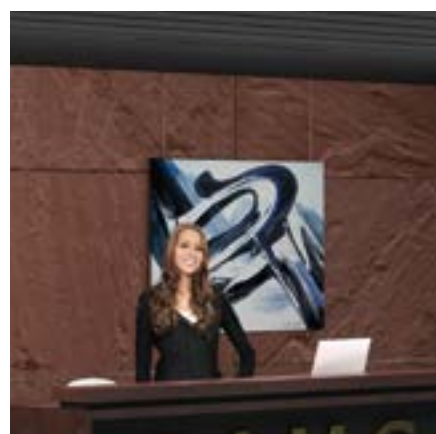
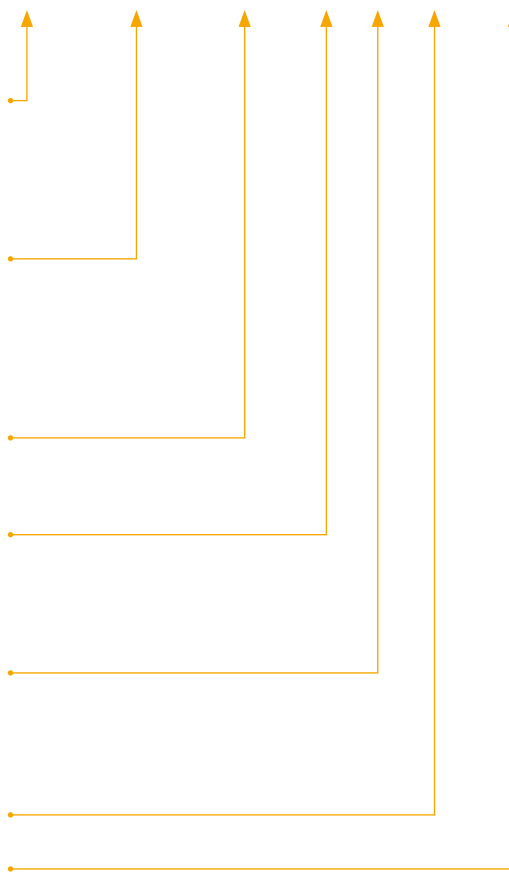
Recessed	R
----------------	---

Optics (DIN 5040:A60)





15° Optic	15
25° Optic	25
40° Optic	40
65° Optic	65

Ingress protection

IP40	IP40
------------	------




Colors

- Black profile with black glare reduction 
- Silver profile with black glare reduction 
- White profile with black glare reduction 
- White profile with white glare reduction 

Please choose your accessories

Fixture comes equipped with mounting brackets and 2 m / 6.56' open end cable pre-equipped.

Recommended power supply	Art.-#	Recommended control unit	Art.-#
<input type="checkbox"/> Power Supply Unit IP20	16000178 	<input type="checkbox"/> Control System White/IQ-White	16000268-DT6 

For max. cable length between driver and fixture please visit www.led-linear.com/cable-length

For actual data, further options and detailed information, please visit our website www.led-linear.com