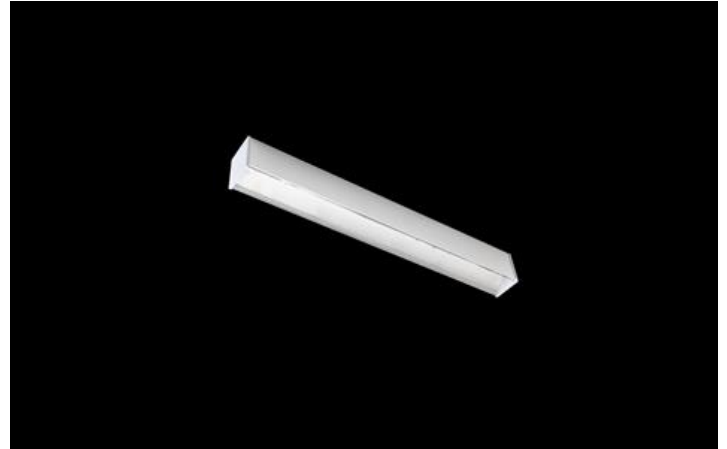


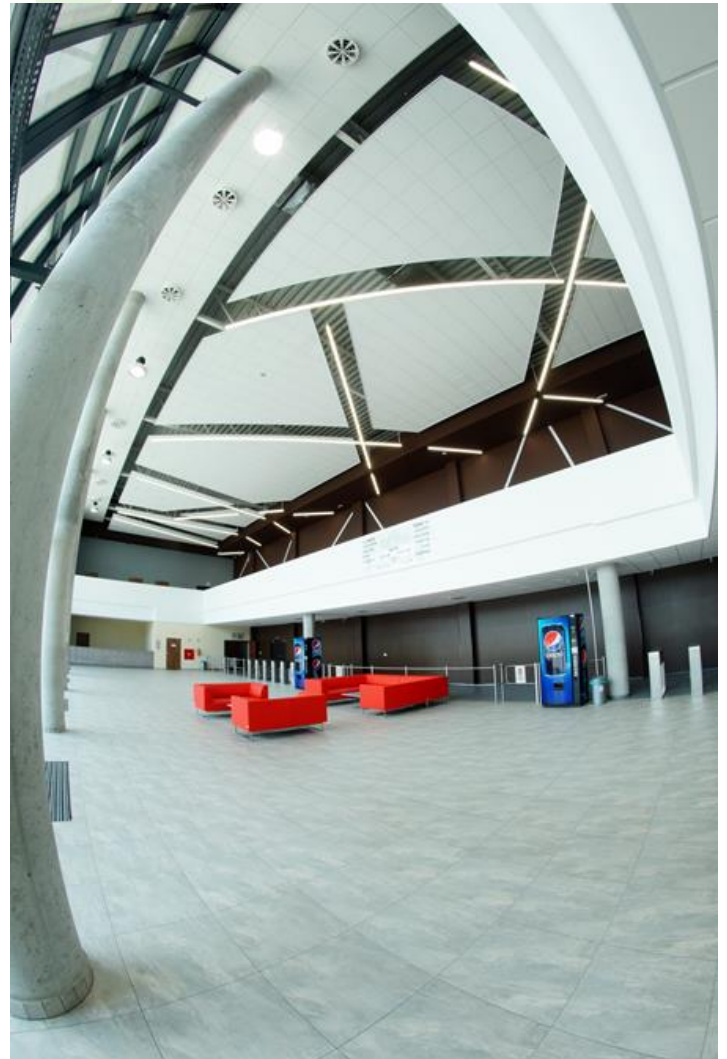


## X-LINE LED LINE

Surface mounted luminaires



Light fitting made out of aluminium profile equipped with opal diffuser or MPRM and driver. X-LINE fittings are intended to be mounted on ceiling or pendants. The luminaires are adjusted to be linked together with specially designed links, which provide great freedom in arranging elements of the system as well as great functionality. In the family of X-LINE LED fittings modules of renowned brands are applied.



Trade Fair and Exhibition Center, Bydgoszcz

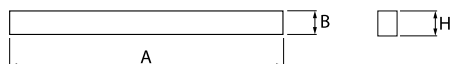
## Pictograms:



## Main parameters:

Name	Luminous flux LED [lm]	Power of luminaire [W]	Color [K]	Dimensions A x B x H [mm]
X-LINE LED 1300	1349 / 1420	9	3000 / 4000	567 x 63 x 74 / 562 x 63 x 74
X-LINE LED 2200	2205 / 2322	14	3000 / 4000	567 x 63 x 74 / 562 x 63 x 74
X-LINE LED 2600	2698 / 2840	17	3000 / 4000	1127 x 63 x 74 / 1122 x 63 x 74
X-LINE LED 3250	3370 / 3550	21	3000 / 4000	1407 x 63 x 74 / 1402 x 63 x 74
X-LINE LED 3900	4047 / 4260	26	3000 / 4000	1687 x 63 x 74 / 1682 x 63 x 74
X-LINE LED 4400	4644 / 4410	28	4000 / 3000	1127 x 63 x 74 / 1122 x 63 x 74
X-LINE LED 5200	5396 / 5680	34	3000 / 4000	2247 x 63 x 74 / 2242 x 63 x 74
X-LINE LED 5500	5515 / 5805	35	3000 / 4000	1407 x 63 x 74 / 1402 x 63 x 74
X-LINE LED 6600	6615	42	3000	1687 x 63 x 74
X-LINE LED 6600	6966 / 6615	42	4000 / 3000	1687 x 63 x 74 / 1682 x 63 x 74
X-LINE LED 8800	9288 / 8820	56	4000 / 3000	2247 x 63 x 74 / 2242 x 63 x 74

## Technical drawing:



## Light and electrical features:

Light source	LED
Voltage	220..240 V, 50..60 Hz
Lifetime of LED sources [h]	100000 (1) / 147000 (2)
Lx/By	L80/B10 (1) / L70/B50 (2)
CRI	>80
SDCM	3
Photobiological risk class	RG0
Operating temperature range [°C]	5 ÷ 30
Driver	standard (E) DIM DALI (EDD) *

\* Variant to specify when ordering

## Mechanical features:

Material	aluminum
Color	anodised aluminum
Diffuser	Micro-PRM (micro-prismatic diffuser PMMA) PLX (PMMA opal)

## Additional information:



Information about minimum number of slings required to mount particular light lines is available on the following page.

Note: The power shown refers to the whole system (tolerance +/- 10%).

Specifications are subject to change. Pictures of the luminaires may differ from reality.  
Date of last update: 20-03-2020

Dodatkowe informacje / Additional information / Zusätzliche Informationen:

\*S - minimalna ilość zawieszń / rozmieszczenie  
- the minimum number of suspensions / placement

$\Phi$ [mm]	S*	
1300	a	(a) 
2200	a	
2600	a	
4400	a	
3250	a	
3900	a	(b) 
6600	a	
5200	b	
8800	b	
11000	c	
13200	c	(c) 