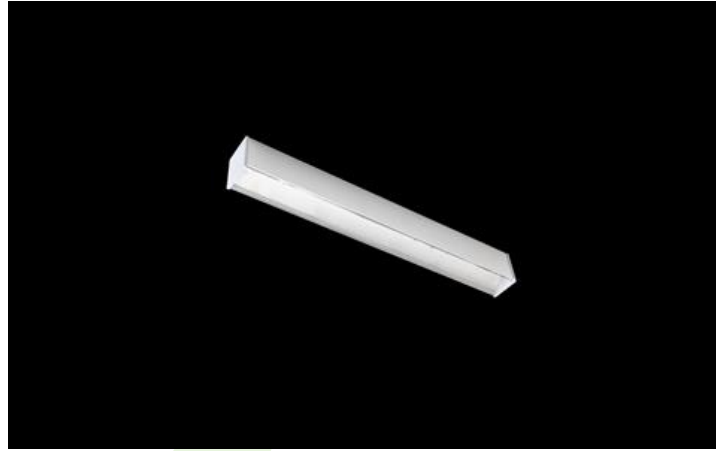


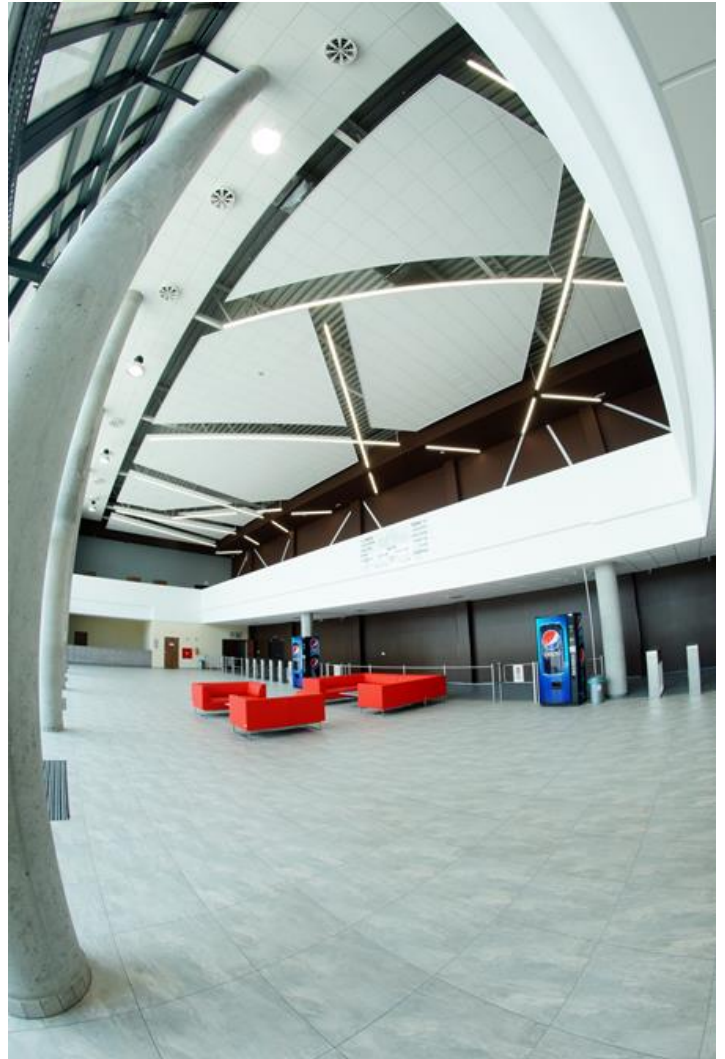


## X-LINE LED

Surface mounted luminaires



Light fitting made out of aluminium profile equipped with opal diffuser or MPRM and driver. X-LINE fittings are intended to be mounted on ceiling or pendants. In the family of X-LINE LED fittings modules of renowned brands are applied.



Trade Fair and Exhibition Center, Bydgoszcz

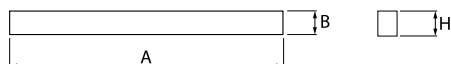
Pictograms:



Main parameters:

Name	Luminous flux LED [lm]	Power of luminaire [W]	Color [K]	Dimensions A x B x H [mm]
X-LINE LED 1300	1349 / 1420	9	3000 / 4000	572 x 63 x 74
X-LINE LED 2200	2205 / 2322	14	3000 / 4000	572 x 63 x 74
X-LINE LED 2600	2840 / 2698	17	4000 / 3000	1132 x 63 x 74
X-LINE LED 3250	3370 / 3550	21	3000 / 4000	1412 x 63 x 74
X-LINE LED 3900	4047 / 4260	26	3000 / 4000	1692 x 63 x 74
X-LINE LED 4400	4410 / 4644	28	3000 / 4000	1132 x 63 x 74
X-LINE LED 4400 TUNABLE WHITE	4304÷4574 (2700÷6500 K)	30÷32 (6500÷2700 K)	2700 ÷ 6500	1132 x 63 x 74
X-LINE LED 5200	5396 / 5680	34	3000 / 4000	2252 x 63 x 74
X-LINE LED 5500	5515 / 5805	35	3000 / 4000	1412 x 63 x 74
X-LINE LED 6500	6745 / 7100	43	3000 / 4000	2814 x 63 x 74
X-LINE LED 6600	6966 / 6615	42	4000 / 3000	1692 x 63 x 74
X-LINE LED 8800	8820 / 9288	56	3000 / 4000	2252 x 63 x 74
X-LINE LED 8800 TUNABLE WHITE	8608÷9148 (2700÷6500 K)	60÷64 (6500÷2700 K)	2700 ÷ 6500	2252 x 63 x 74

Technical drawing:



**Light and electrical features:**

<b>Light source</b>	LED
<b>Voltage</b>	220..240 V, 50..60 Hz
<b>Lifetime of LED sources [h]</b>	100000 (1) / 147000 (2)/50000
<b>Lx/By</b>	L80/B10 (1) / L70/B50 (2)/L80/B10
<b>CRI</b>	>80/>75
<b>SDCM</b>	3
<b>Photobiological risk class</b>	RG0
<b>Operating temperature range [°C]</b>	5 ÷ 30
<b>Driver</b>	standard (E) DIM DALI (EDD) *

\* Variant to specify when ordering

**Mechanical features:**

<b>Material</b>	aluminum
<b>Color</b>	anodised aluminum
<b>Diffuser</b>	Micro-PRM (micro-prismatic diffuser PMMA) PLX (PMMA opal)

Note: The power shown refers to the whole system (tolerance +/- 10%).

Specifications are subject to change. Pictures of the luminaires may differ from reality.  
Date of last update: 13-03-2020