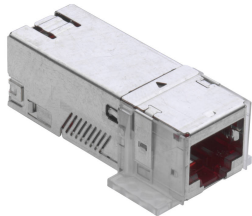


Product information

Connection Module Cat. 6A, 1xRJ45/s, 10x

R509504
966733885
10 pcs



The module for the highest standards. Guarantees the best performance reserves for 10G Ethernet cabling and beyond.

- RJ45 Cat. 6_A ISO connection module, shielded
- Mounting plate
- EMC cover
- Dust cover
- Cable tie
- Installation instructions

090.5360 / similar product

Description

The R&M *freenet* Cat. 6_A shielded connection modules, part of the Advanced cabling system, are ideal for voice, fast data transmissions and high bandwidth applications. This high-performance Cat. 6_A module is perfect for use in 10 Gigabit Ethernet (10GBASE-T) and future high-speed applications to 500 MHz. Together with Cat.7A installation cables with AWG22 it is «25G Ready» according to TR11801-9905 and allows for 25GBase-T transmission up to 30m.

Technical Data

DESCRIPTION [UNIT]	VALUE/VALUE RANGE
Standard / norm	UL Listed IEC 60603-7: Electrical Characteristics of the Telecommunication Outlets ISO/IEC 11801 EN 50173-1 ISO/IEC TR11801-9905
Protection class IP	IP 20 IP 10 (correlates to NEMA 1)
PoE	Yes
Connector class	connection module
Shielding connector (A)	shielded
Connector type (A)	RJ45
Category connector (A)	Cat. 6A ISO «25G Ready»
Holder for connector / module	Mounting plate
Wiring diagram	T568A and T568B
Poles	8

Mechanical Data

DESCRIPTION [UNIT]	VALUE/VALUE RANGE
Color	silver / red
Material	plastic: PC, UL 94 V-0

RJ45 connection module of Cat. 6A ISO, for the setting up of transmission channels of Class EA with up to 4

plugged connections acc. to ISO/IEC 11801, EN 50173-1, (DIN EN 50173-1) and Class F on 2 pairs, complies with Cat. 6A requirements of the standards ISO/IEC 11801, EN 50173-1, as well the U.S. standard Cat. 6A according to TIA/EIA 568.2-D, re-embedded tested in acc. with IEC 60603-7-51 and 60512-27-100, interoperable and backwards compatible with Category 6 and Category 5e.
Suitable for 10GBASE-T applications in acc. with IEEE 802.3™ Section Four up to 500 MHz and 100 m.
Meets the requirements of ISO/IEC TR11801-9905 together with Cat.7A installation cables with AWG22 and allows for 25GBase-T transmission up to 30m.
Tested in line with R&M's manufacturing control, performing 100% inspection.
Compatible with RJ standard plugs (RJ11, RJ12, RJ45), connection with automatic wire cutting of installation cables AWG 26 - 22 (0.4 mm - 0.65 mm) and flexible cables AWG 26/7 - AWG 22/7 without special tools. X-Separator for individual pair shielding. Parallel pair termination without crossover in acc. with TIA 568-A/B, gold-plated bronze contacts for >1000 mating cycles, IDC contacts with >20 insertion cycles, contact resistance <5 mOhm, dielectric strength >1000 Veff. Supports PoE (IEEE 802.3af), PoEP (IEEE 802.3at), 4PpoE (IEEE 802.3bt) and is compatible to IEC 60512-99-001/002. 90° wire orientation without bending cable. With integral cable strain relief, including dust cover. Shield contacting by patented shield lance with integral cable strain relief, shield material tin-coated bronze, ground contacting through 1 contact finger for flat connectors 4.8 x 0.5 mm. Material: halogen-free and heavy-metal free in acc. with EU directives RoHS 2.
Connection module Cat. 6A ISO, shielded, with EMC cover, dust cover, mounting plate, cable tie and installation instructions.