

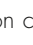


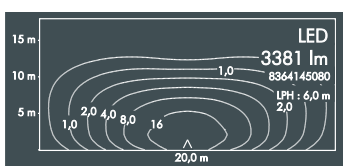
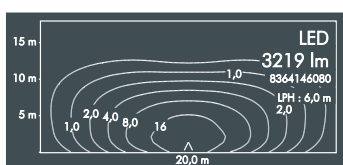
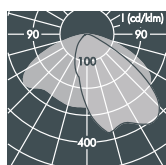
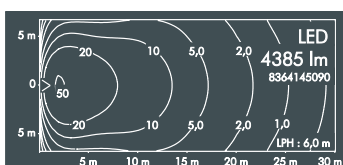
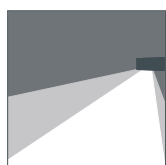
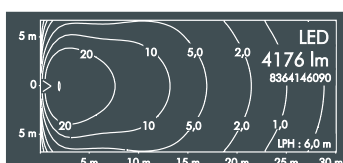
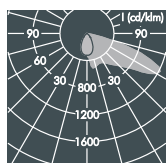
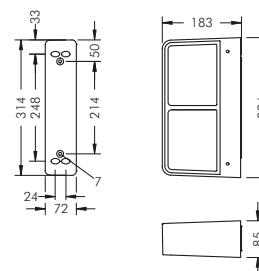
Unit is a new wall luminaire for the uniform illumination of floor areas adjacent to buildings. The clean housing design allows the luminaires to be used in various different architectural environments. There is a choice between an asymmetrical light distribution for area lighting and a lateral wide beam distribution for lighting of floor areas along façades. Alternatively, the luminaire can be used as an uplight for the illumination of ceilings or canopies.



Unit creates uniform illumination on floor areas adjacent to buildings – alternatively with asymmetrical or lateral wide beam light distributions.

Unit with one-sided light emission

With 2 highly efficient LED modules,
integral temperature monitoring device,
CRI: > 80, Colour tolerance: max. 3 SDCM
Service life: L80/B20 > 50 000 h
protection class I, IP65 , IK08
windage area AW 0.057 m²
corrosion-resistant die cast aluminium housing AlSi12,
polyester powder coated,
highly efficient reflector,
all exterior steel parts are stainless steel,
tempered safety glass, silicon gasket,
wall box with 2 stainless steel screws:
2 drilled holes Ø 7 mm, spacing 214 mm,
4 cable entries for recessed or
surface mounted cable Ø 7 - 10 mm,
integral driver (AC/DC)



Alternatively, the
luminaires can be
used as uplights for
indirect illumination.

Unit, asymmetrical beam

Part number	Colour	Weight	Light source	Luminous flux	Main beam angle γ
8 364 146 099	black	3.3 kg	2 x LED module 18.5 W	4176 lm	63°
8 364 166 099	white		(37 W)		
8 364 156 099	silver grey		warm white (3000 K)		

Part number	Colour	Weight	Light source	Luminous flux	Main beam angle γ
8 364 145 099	black	3.3 kg	2 x LED module 18.5 W	4385 lm	63°
8 364 165 099	white		(37 W)		
8 364 155 099	silver grey		neutral white (4000 K)		

Unit, lateral wide beam

Part number	Colour	Weight	Light source	Luminous flux	Beam angle γ (FWHM)	
8 364 146 089	black	3.3 kg	2 x LED module 18 W	3219 lm	C 0 - 180	C 90 - 270
8 364 166 089	white		(36 W)		62°	142°
8 364 156 089	silver grey		warm white (3000 K)			

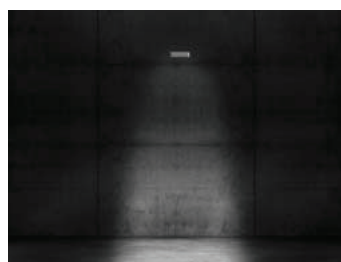
Part number	Colour	Weight	Light source	Luminous flux	Beam angle γ (FWHM)	
8 364 145 089	black	3.3 kg	2 x LED module 18 W	3381 lm	C 0 - 180	C 90 - 270
8 364 165 089	white		(36 W)		62°	142°
8 364 155 089	silver grey		neutral white (4000 K)			

Part number	Description
... .. 1 ..	Dimmable luminaire (DALI)

Accessories Unit, Louvre (internal, factory fitted, no retro-fitting)

123 0 516 940 Unit asymmetrical beam, vertical louvre, stainless steel, to reduce lateral glare

123 0 517 940 Unit lateral wide beam, horizontal louvre, stainless steel, to reduce glare



For Unit there is a choice of two different reflector options – an asymmetrical distribution for area lighting and a lateral wide beam distribution for uniform illumination of floor areas along façades.

LED

Luminaires available in 2700 K and other colour temperatures upon request

