

KALYPSO True Color

Highlighting architectural details



LED LINEAR™
lighting solutions

Member of the
Fagerhult Group

KALYPSO True Color

POWERFUL GRAZER

- Highlighting structured facades, walls and sculptures in the dark needs a brilliant luminaire. A linear and slim design would solve the issue of less space and enables long lines of light, creating the perfect product for decorative lighting, wall grazing and wall flooding.
- KALYPSO True Color is based on a functional powder coated aluminum profile in combination with polyurethane encapsulation which provides a high degree of robustness. Its ingress reaches IP67 as well as an IK10 impact resistance. The translucent end caps make it possible to create infinite lines of light. This is further enhanced by the cable runway, hiding cables and mounting clips.
- KALYPSO True Color is a minimalistic luminaire suitable for decorative lighting as well as for wall grazing and wall flooding. Due to its three optics and its IP67 rating, a high range of opportunities is covered. A maximum output of 3,580 lm/m (1,090 lm/ft) combined with a CCT ranging between 2,000 K to 5,000 K makes KALYPSO True Color a multi-functional luminaire.

KEY FEATURES

OPTICS

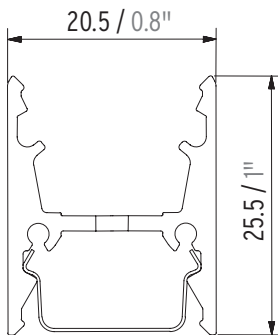
The different optics enable the possibility to adapt KALYPSO True Color to the specific project. The 10° optic is better with wall grazing, the 30° is made for accent and decorative light and the 60° optic is best for wall flooding. KALYPSO True Color stands out through the combination of these optics and the polyurethane encapsulation, making outdoor applications possible.



KEY FEATURES

INVISIBLE CABLING

The cable groove makes cables and mounting clips disappear, keeping a straight and clean line of light. The left image illustrates the profile where the fixture is inserted in the upper channel and cables run below. The right image shows how clips and cables won't be visible when multiple fixtures are mounted in line.

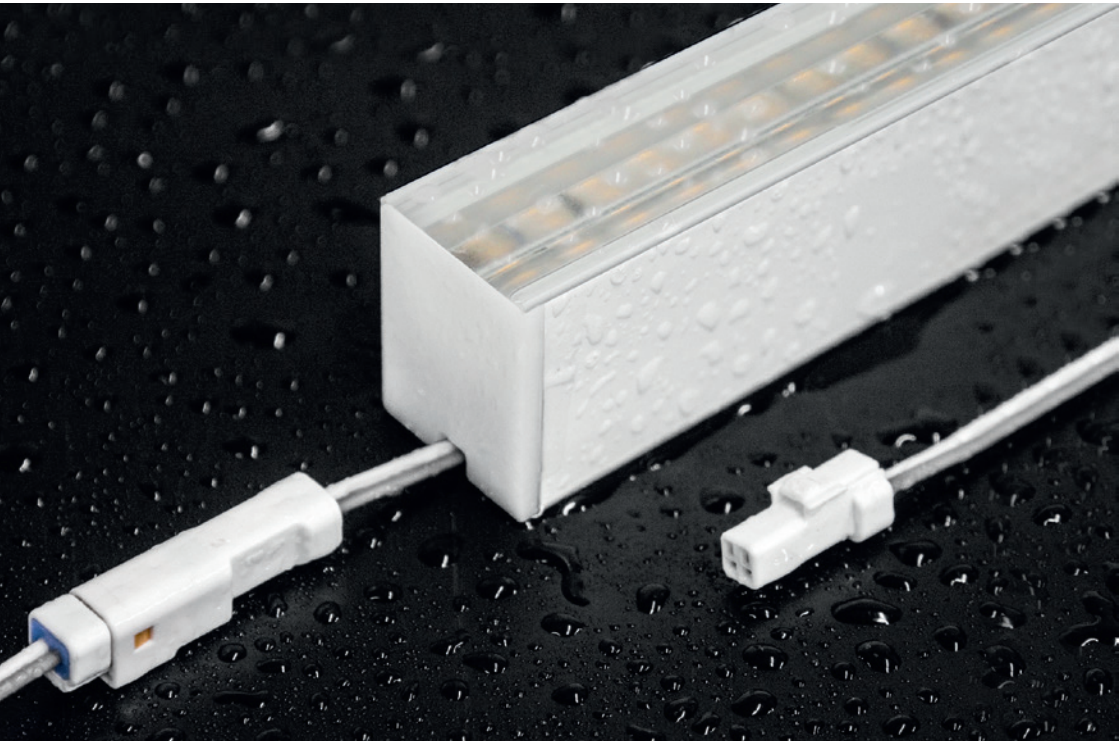


KEY FEATURES

IP67 & IK10

By designing KALYPSO True Color to apply in outdoor projects, the specifying community find their go to product in wall grazing and wall flooding applications. The IP67 and IK10 classifications is achieved through a clear polyurethane encapsulation and aluminum housing. This makes KALYPSO True Color resistant to environmental and mechanical impact.

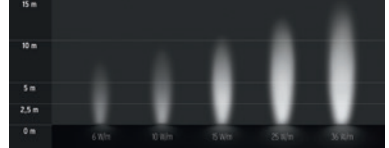
IK10 means that the fixture can withstand an impact of 20 Joule, equivalent to 5 kg dropped from 400 mm (1.31'). As the IP67 means that the fixture is resistant to UV-light, saltwater, temporary immersion and solvents.



LENSES

10°

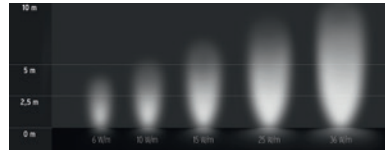
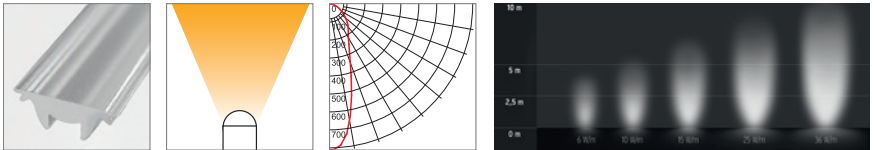
Narrow



The 10° Lens is suitable for wall grazing

30°

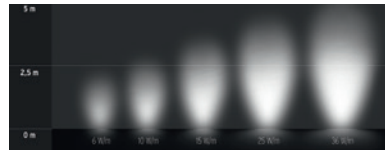
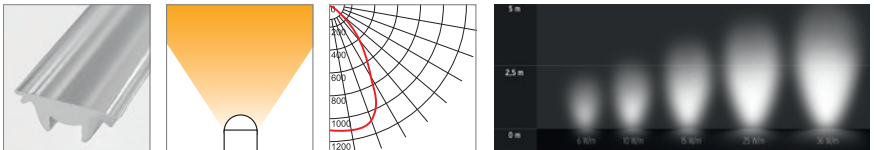
Medium



The 30° Lens is suitable for general-, accent- and decorative illumination

60°

Wide



The 60° Lens is suitable for general, accent and decorative illumination and wall flooding

TECHNICAL DATA

- Lumen output from 330 lm/m to 3,580 lm/m (100 lm/ft to 1,090 lm/ft)
- Color temperature between 2,000 K and 5,000 K
- CRI up to 95
- Efficiency up to 67 lm/W
- IP 67 & IK10
- Available in IQ White and RGB
- Lifetime 60,000 h L80/B10

The many options that lie in KALYPSO True Color in terms of lumen output, color temperature and efficiency make it possible to modify the product to fit any project. This range of possibilities makes KALYPSO True Color a go to product for wall grazing and wall flooding applications.

LIGHTING INNOVATIONS

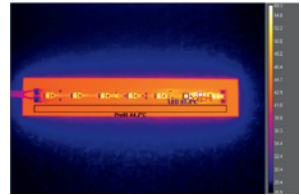
TRUE COLOR

KALYPSO True Color has an optimal rendition of the LED spectrum, meaning no color shift. If the tape has 3,500 K, the light coming out of the fixture will also be 3,500 K. This improves the homogeneity of the light emission surface, also in a long term perspective.

Tj Away®

LED LINEAR™ TECHNOLOGY

KALYPSO True Color embeds the LED Linear™ Tj Away® technology which provides optimal heat dissipation of the LED to the housing profile. This enables the miniaturization of the luminaire's footprint while ensuring an extended lifetime compared to conventional LED technologies.



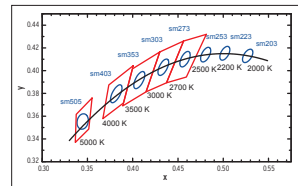
Experimental setup: 40 W/m (12 W/ft) LED tape with thin flexible PCB mounted on flat aluminum plate LED temperature does not exceed 60°C (140°F).



**ONE
BIN
ONLY**

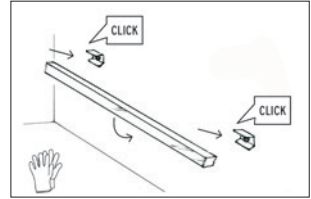
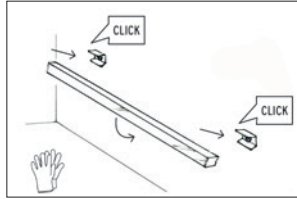
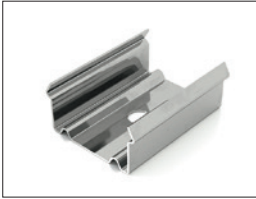
Color consistency plays a key role as much as homogeneity in any linear lighting application. To ensure an outstanding quality of the light, LED Linear™ introduced One Bin Only which ensures that all LEDs used in our luminaires are picked from one bin centered on the target CCT within a 3 step MacAdams Ellipse. They are used to determine visual color deviations and indicate differences in light color of individual LEDs. 3 step MacAdam ensures a color variation unnoticeable by the human eye and therefore an optimal lighting quality.

Color consistency plays a key role as much as homogeneity in any linear lighting application.

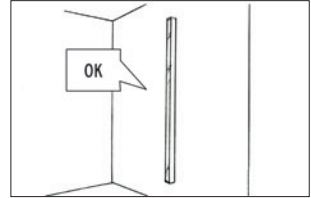
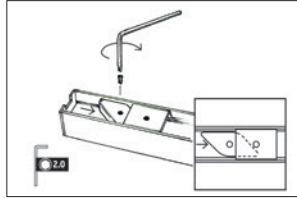


Black Body Curve ———
LED Linear™ Binning ———
ANSI Binning ———

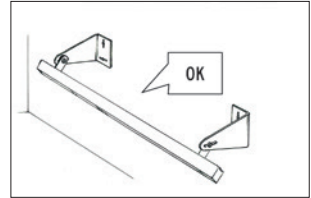
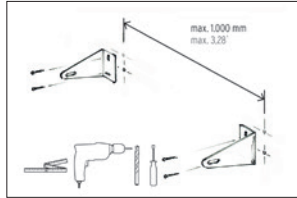
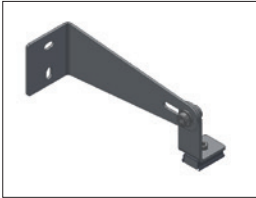
MOUNTING



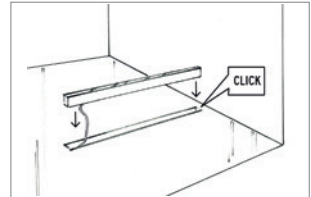
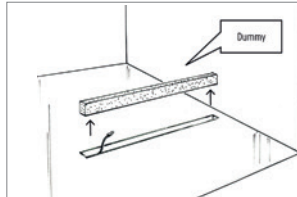
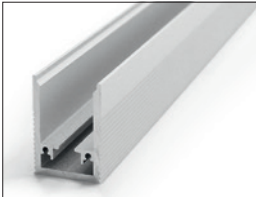
ADONIS True Color is easily installed with the mounting clip



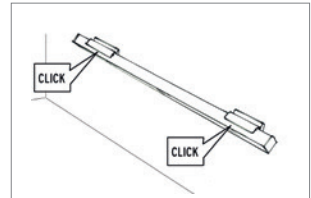
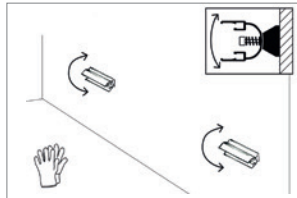
Vertical mount requires a mounting lock



The adjustable wall mount set suits applications that require the possibility to tilt the fixture



In-ground channel improves drainage and protect the fixture



Adjustable mounting clip

Please see our detailed mounting instructions on the website

REFERENCES



Efficiently highlighting wall structures



Setting accents to architecture and structured walls



Eye-catching lines in high buildings



Powerful grazing of high buildings

A | Photo: BM Light OÜ

B | Photo: Archit Prajapati

C | Photo: Photowalas

Please scan the QR Code for more
detailed information about
KALYPSO True Color IP67

