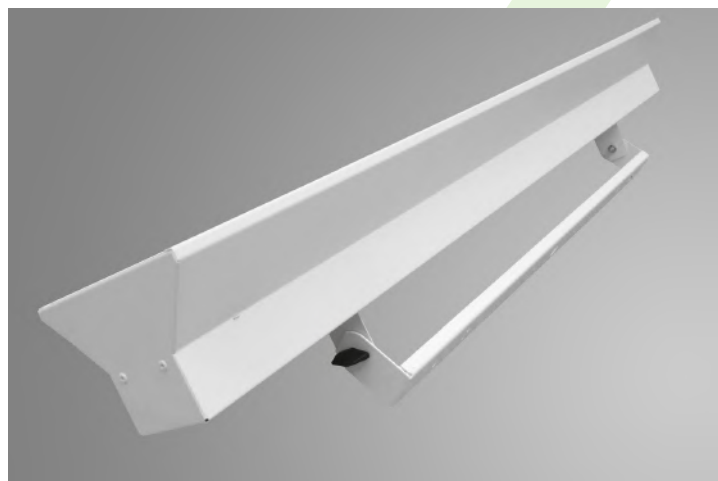
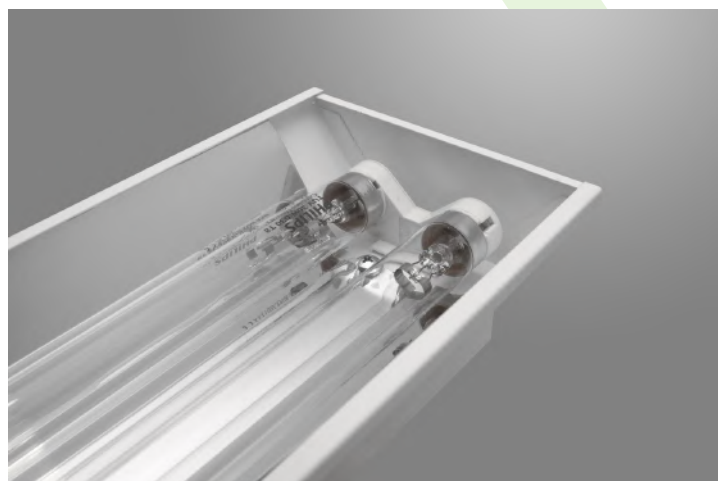




AGALINE UV-C

Bactericidal UV-C luminaires

The luminaire produced in a factory with ISO 13485 medical certificate



Bactericidal luminaire produced in the plant, which is the only one in Poland, it has a quality management system for production Medical Devices ISO 13485 - design certificate and making lighting fittings for medical use. luminaire dedicated for T8 emitting fluorescent lamps UV-C radiation in the wave range from 200 to 280 nm, effectively and irretrievably eliminating all viruses, bacteria and fungi. Housing made of steel with mounted reflector aluminum. Rotary holder included for a ceiling or wall mounting. Optional: installation on a dedicated stand allowing it to be left behind fixtures anywhere. Dedicated to disinfect rooms in hospitals, doctor's offices, processing plants and food warehouses, offices without air conditioning systems, public spaces used daily by a large number of people.



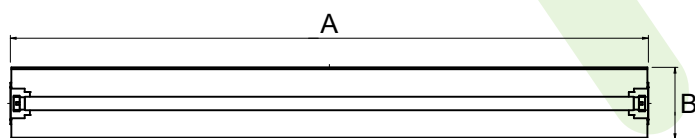
Pictograms:



Main parameters:

Name	Luminous flux LED [lm]	Power of luminaire [W]	Socket	Dimensions A x B x H [mm]
AGALINE W/GM UV-C	T8	1 x 30	G13	930 x 140 x 170
AGALINE W/GM UV-C	T8	1 x 36	G13	1235 x 140 x 170
AGALINE W/GM UV-C	T8	2 x 30	G13	930 x 140 x 170
AGALINE W/GM UV-C	T8	2 x 36	G13	1235 x 140 x 170

Technical drawing:



Light and electrical features:

Light source	T8
Voltage	220..240 V, 50..60 Hz
Lifetime of light source [h]	9000
Operating temperature range [°C]	5 ÷ 30
Driver	profesional ballast

Biocidal features:

Dominant wavelength [nm]	254
Range	1x15/30/36 W - to 6/10/12 m ² 2x15/30/36 W - to 12/18/25 m ²
UV-C Radiation intensity	1x15/30/36 W: 1,0 ÷ 2,1 W/m ² 2x15/30/36 W: 2,1 ÷ 2,8 W/m ²

Others

- light sources contain a small amount of mercury
- for the first 100 hours of lamp operation, light sources emit a small amount of ozone. After it is recommended to ventilate the room.

Photobiological risk class (IEC/EN 62471)

RG3 (high risk)
Lamps can threat even during a short exposure. Using them together with general lighting is not allowed.

Optional

- protective foil for T8 sources (glass protection in the case of fluorescent lamp cracks)
- version with bactericidal coating

Timer (optional)

Monitoring the hours of lamp source operation
Modes of operation:
Delayed shutdown
Delayed switching on
Cyclic shutdown
Cyclical switching
Delayed momentary switching on

Mechanical features:

Assembly	direct to the ceiling or on the wall (version W) on the portable stand with wheels (version GM)
Material	steel sheet
Color	white
Others (optional)	mounting on a dedicated stand mounting on a dedicated stand with wheels metal cover to protect the reflector and source protective grid motion sensor (turns off the luminaire in the case of detecting human presence)

Akcesoria*:

* - necessary for the version AGALINE GM UV-C

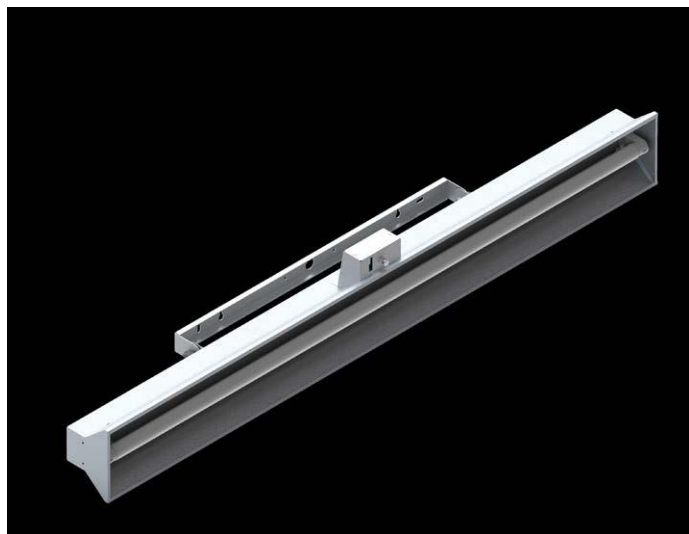
Name	STOJAK AGALINE / OKTAN 34
Indekx	0B1AO-ST
Picture	



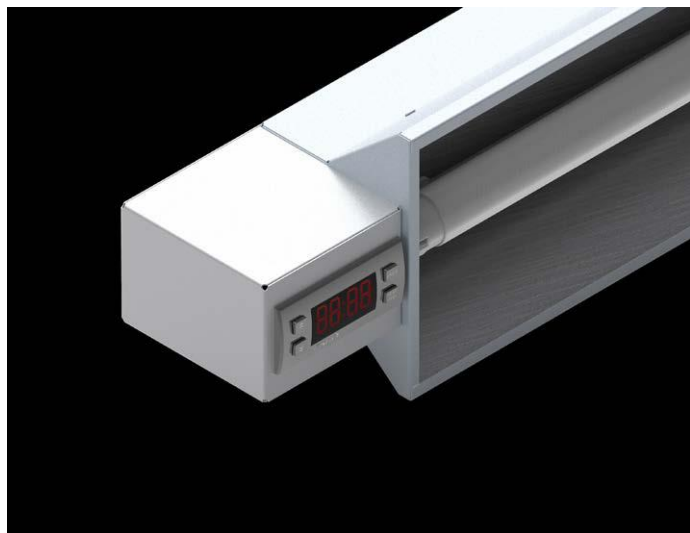
Specifications are subject to change.
Pictures of the luminaires may differ from reality.
Date of last update: 13-05-2020

Dodatkowe informacje / Additional information / Zusätzliche Informationen:

Wersja z czujnikiem ruchu CMW / Versions with movement sensor (CMW) / Versions mit Bewegungsmelder (CMW):



Wersja z zegarem / Versions with timer / Versions mit Timer:



1023 (30 W) / 1328 (36 W)

