

# Square 270 - exterior

Design: schmidt hammer lassen design



With light slits at the top and bottom, Square offers a soft light without glaring. The downwards light is dominant due to the position of the lamps.

In case of interior use Square can be turned upside down, but when used outdoors the correct orientation is important due to drainage of moisture.

Square is also available with downward light only.

Characters and symbols can be cut out in the front, resulting in clear signage even at darkness.

## Dimensions:

250x250 and 270x270 mm

## Finish:

White RAL 9010, shine 30

Black Noir 900 Sable or RAL 9005, shine 30

Graphite grey YW355F

Corten brown YX355F

Brushed copper

Galvanised

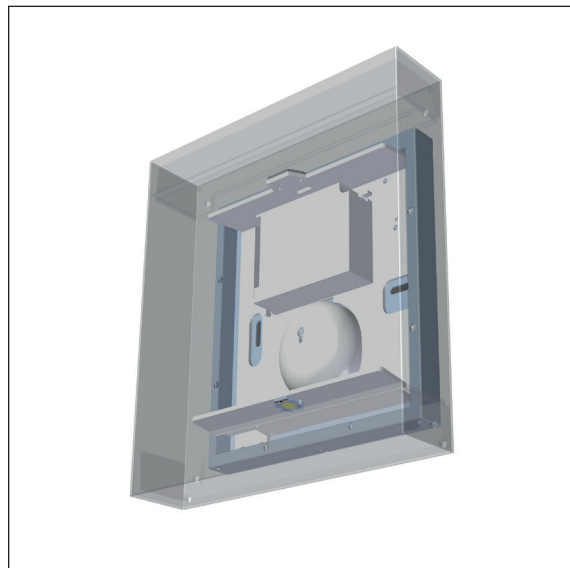
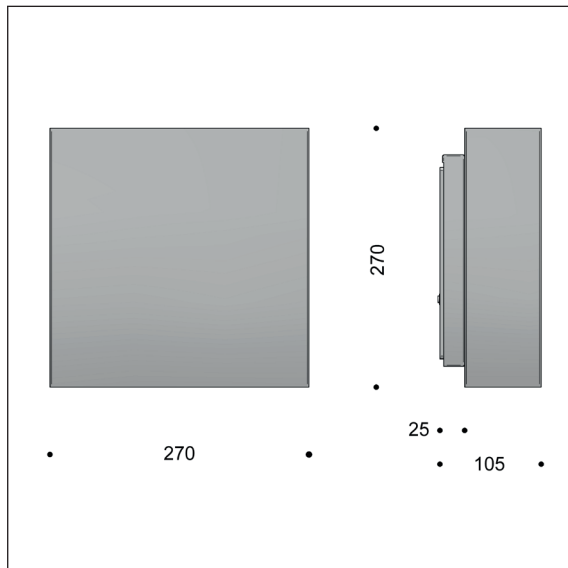
## Lamp types:

LED Bridgelux

E27 base

# Square 270 - exterior - LED

Design: schmidt hammer lassen design



## Luminaire specification:

Material:	Steel, galvanised or coated, or copper. Copper will be brushed; can be polished upon request.
Finish:	Graphite grey: YW355F White: RAL 9010, shine 30 Black: Noir 900 Sablé or RAL 9005, shine 30 Corten brown: YX355F
Screen:	Polycarbonate, opalised
Cutting in front:	Digits can be cut out in the front. See specification below. Cuttings in galvanised units may have minor irregularities.
Mounting:	On wall or wall box
Connection:	Cable entry (2 x 1,5 mm <sup>2</sup> ), 5-pole 4 mm <sup>2</sup> terminal block
Classification:	IP45, class I, class II optional, IK09
Weight:	2.5 kg

## Lamp and driver specification:

LED type:	Bridgelux Vero 10 + V6
Total consumption:	15 or 20 W (350-500 mA)
Downwards only:	Bridgelux Vero 10
Total consumption:	12 W (350 mA)
Service life:	100,000 hours at t <sub>a</sub> max 25°, L80B10
Colour temperature:	2700, 3000, or 4000 Kelvin
Colour rendering:	min 90 Ra
Output ratio:	62 per cent
Driver:	Helvar coated LED driver, 350-500 mA Dimming optional
Service life:	min 50,000 hours

## Product codes:

SQUARE 270 with Bridgelux LED									
Item No.	Lamp type		Select colour, colour temperature, dimming, etc. in the table below.						
6824-	15 W Bridgelux, 350 mA								
6827-	20 W Bridgelux, 500 mA								
6825-	12 W Bridgelux, 350 mA, downwards only								
Combine with:	Colour		Colour temperature		Dimming		Class II		Laser cutting in front
	1	white	927	2700 K, 90 Ra	V	1-10 V	empty	class I	empty no cutting
	3	black RAL 9005	930	3000 K, 90 Ra	D	Dali	K	class II	C digits in front
	4	graphite grey	940	4000 K, 90 Ra					
	8	copper							
	9	galvanised							
	17	corten brown							
	66	black noir 900							
Example:	6824-66927D = Square 270, black noir 900, 15 W LED, 2700 K, 90 Ra, Dali								

# Square 270 - cut-out - LED

Design: schmidt hammer lassen design

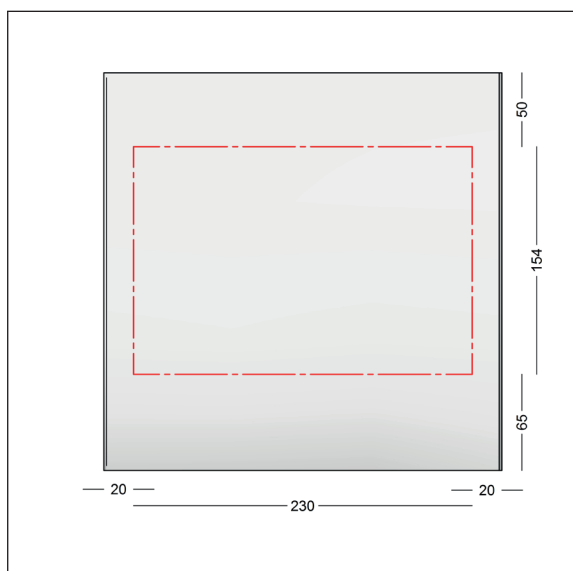


Square 270 with LED can be provided with digits or pictograms. The cut-out is closed by an opal-white polycarbonate shade.

In order to obtain regular illumination through the cuttings please observe the recommendations below. This is due to the position of the LED arrays, which can be seen in the LED product data.

**Note.** Cuttings in galvanised units may have minor irregularities.

Image: Square 270, digit height: 80 mm



## Square 270 LED

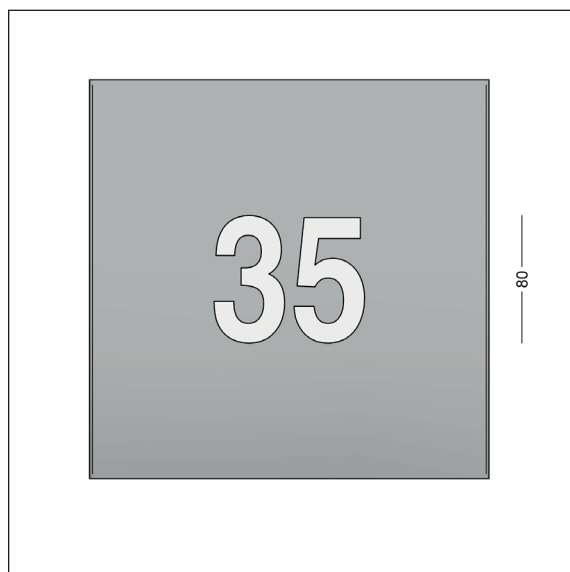
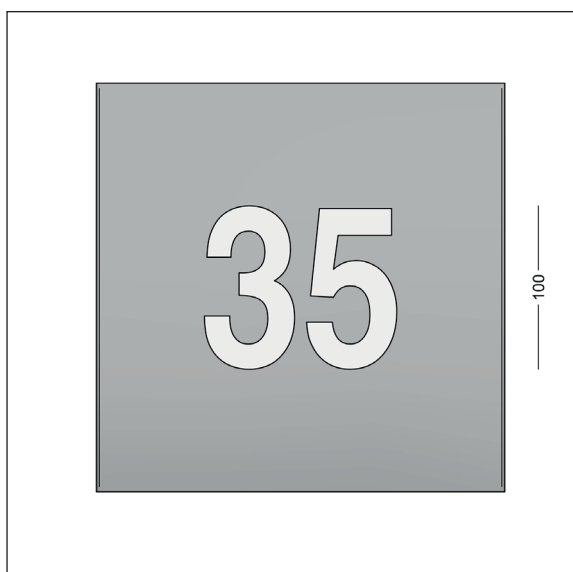
Recommended cutting field: W 230 x H 154 mm  
The height is depending on the number of characters and the width of the individual character.

Font: Universe Bold

The minimum top and bottom margins are 50 and 65 mm respectively. They are necessary to avoid visible components through the cut-out.

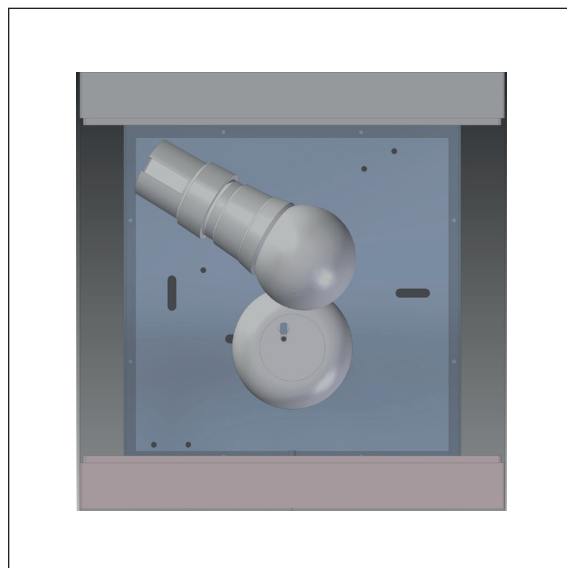
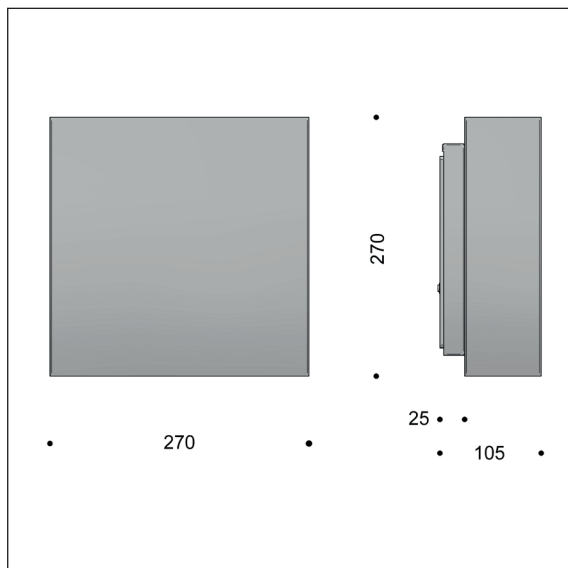
## Square 270 LED - examples below

Cut-out in the centre: H 100 mm / 80 mm



# Square 270 - exterior - E27

Design: schmidt hammer lassen design



## Luminaire specification:

Material:	Steel, galvanised or coated, or copper. Copper will be brushed; can be polished upon request.
Finish:	Graphite grey: YW355F White: RAL 9010, shine 30 Black: Noir 900 Sablé or RAL 9005, shine 30 Corten brown: YX355F
Screen:	Polycarbonate, opalised
Cutting in front:	Digits can be cut out in the front. See specification below. Cuttings in galvanised units may have minor irregularities.
Mounting:	On wall or wall box
Connection:	Cable entry (2 x 1,5 mm <sup>2</sup> ), 5-pole 4 mm <sup>2</sup> terminal block
Classification:	IP45, class I, class II optional, IK07
Weight:	2.5 kg

## E27:

Lamp type:	13 W LED, Philips Core Pro or other E27 type, max 30 W, max Ø60 x 120 mm
Operational life:	15,000 hours
Colour temperature:	3000 K
Colour rendering:	80 Ra
Output ratio:	26 per cent

## Product codes:

SQUARE 270, E27 base										
Item No.	Lamp type		Select colour in the table below.							
6003-	13 W LED, Philips Core Pro or alike, max 30 W									
6007-	13 W LED, Philips Core Pro or alike, max 30 W, downwards only									
Combine with:	Colour		Laser cutting in front							
	1	white	empty	no cutting						
	3	black RAL 9005	C	digits in front						
	4	graphite grey								
	8	copper								
	9	galvanised								
	17	corten brown								
	66	black noir 900								
Example:	6003-1 = Square 270, white, E27									

# Square 270 - cut-out - E27

Design: schmidt hammer lassen design

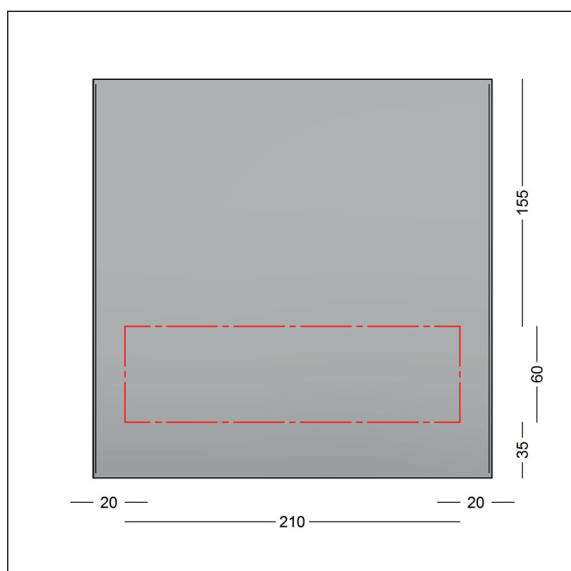


Square 270 with E27 base can be provided with digits or pictograms. Due to the orientation of the lamp, the cut-out is in the bottom part and closed by an opal-white polycarbonate shade.

In order to obtain regular illumination through the cuttings please observe the recommendations below.

**Note.** Cuttings in galvanised units may have minor irregularities.

Image: Square copper, digit height: 40 mm



## Square 270 for E27 – bottom

Recommended cutting field: W 230 x H 60 mm

The height is depending on the number of characters and the width of the individual character.

Font: Universe Bold

The minimum bottom margin is 35 mm in order to avoid visible components through the cut-out.

The sketch shows the Square 250.