



LENTY PLUS TRACK

TRACK LIGHTS

More power meets more visual comfort. This high lumen-output lens spotlight is a winning addition to the LENTY product range. A simple design, larger size and brighter core light: LENTY PLUS illuminates merchandise and target objects extremely vividly even from larger distances.



Lens technology instead of reflector technology

More concentrated, more directed light on the target surface



Optimised lighting technology

Pleasant, glare-free visual comfort due to combination of lens and limiter



Create highlights

With high light intensity up to 4000 lm



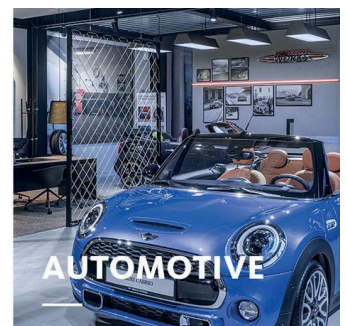
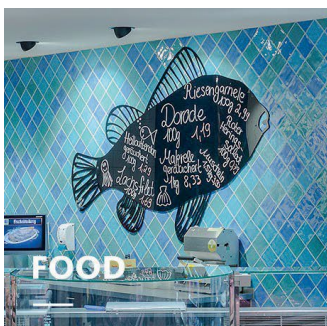
Mounting option

Complete luminaire for track; further variant for connection to E-LINE NEXT



Intelligent light

Smart lighting management optionally with control line or wireless



LENTY PLUS TRACK

www.oktalite.com/lenty

Luminaire type	Track lights
Application areas	Accent lighting
Range of action	Can be rotated through 355° and swiveled through 100
Fastening	3P conductor rail, not suitable for vertical mounting
Lighting technology	LED, LED IQ DALI, LED IQ BLE
Emission characteristics	Spot, Medium Flood, Flood, Wide Flood, Very Wide Flood
LED luminous flux class	2000 lm - 4000 lm
Light colour CRI 80	2700 K, 3000 K, 3500 K, 4000 K
Light colour CRI 90	3100 K - Brilliant Colour, 3200 K - Efficient White, 4000 K - Efficient Cool
Light colour Food	2700 K - Brilliant Food
Supply unit	Integrated driver
Luminaire colour	RAL 9005 jet black RAL 9016 traffic white Special colours on request
Surface	structure powder-coated
Nominal voltage	220 - 240 V, 50/60Hz
Weight	approx. 1.0 kg
Test mark	