



PPAD-C-MB-EXT-DALI-ADDR

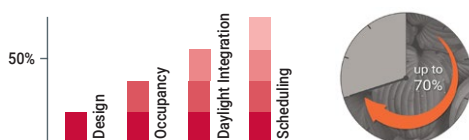
P65 Ceiling mounted, mid bay DALI addressable presence/absence detector

Key Features

- PIR Sensor: Detects movement within the unit's detection range, allowing load control in response to changes in occupancy.
- Light Level Sensor: Measures the overall light level in the detection area.
- Status LEDs.
- Connection to DALI network for power and communication.
- IP65, suitable for exterior use.



Achievable Energy Savings



Code Compliance

- Improves BREEAM & LEED scoring for building sustainability.
- Contributes to energy reduction targets under Climate Change Levy (CCL) and Carbon Reduction Commitment (CRC).
- Qualifies for Enhanced Capital Allowance (ECA) applications.
- Delivers lighting control requirements under UK Building Regs - L2a & L2b and BRE: 498.

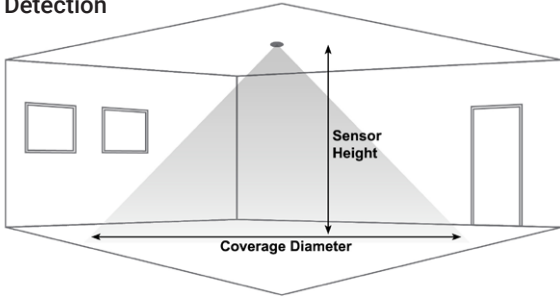
Overview

The PPAD-C-MB-EXT-DALI-ADDR is a compact IP65 rated, mid bay ceiling mounted, fully addressable DALI passive infrared PIR presence/absence detector designed to be part of the iLight Series DALI network*

Functioning as a presence detector, the unit returns occupancy data to the DALI network.

The photocell also provides a lux level measurement value to the DALI network.

Detection



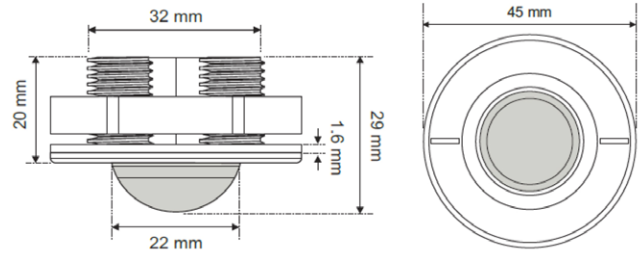
Walk across

Sensor Height	Coverage Diameter
7m	16m
2.8m	9m

Walk towards

Sensor Height	Coverage Diameter
7m	10m
2.8m	5m

Dimensions



Commissioning

*This sensor is intended for use with iLight DALI controllers (Using SCMD4 or SCMD2). Commissioning is done when addressing devices on the DALI line.

Technical Specifications

Weight: 0.10kg

Supply Voltage: 9.5VDC–22.5VDC via DALI

Supply Current 8mA

Temperature range: -10°C to 35°C

Humidity: 5 to 95% non-condensing

Material (casing): Flame retardant ABS and PC/ABS

Type: Class 2

IP rating: IP65

Compliance: EMC-2014/30/EU
LVD-2014/35/EU
2016 SI No 1091
2016 SI No 1101

Contact Us

enquiries@iLight.co.uk

www.iLight.co.uk

iLight

A brand of Signify
Usk House, Llantarnam Park
Cwmbran, NP44 3HD, UK

Changes to the products, to the information contained in this document, and to prices are reserved; so are errors and omissions.

© 2024 Signify Holding
All Rights Reserved

iLight is a registered trademark.
All other trademarks are property of their respective owners.

PPAD-C-MB-EXT-DALI-ADDR Rev5 0124



FM 727924