



Reliable explosion proof lighting

Explosion proof LED luminaires certified for use in hazardous areas according to ATEX directive

STRONGEX 2 Zone 2, 22

Extreme robustness and resistance against impacts and chemical agents



Ex II 3G Ex ec IIC T5/T6 Gc
Ex II 3D Ex tc IIIC T85...T100 Dc

ATEX certificate No: OBAC 20 ATEX 0334X

Up to 6,200lm
Up to 150lm/W
L80 100,000 h

IP66 / IP69K
IK10



Characteristics

- Gas tight luminaire, suitable for outdoor and off-shore applications.
- High impact resistant PMMA.
- End caps in PA66 and fibreglass.
- 316L stainless steel fixing brackets.
- With EX cable gland or EX quick connector.

Accessories

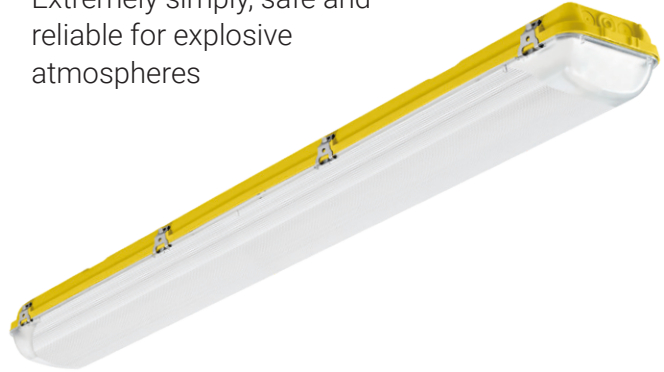
- Junction boxes.
- Connector bag PNCX.

Applications



ACQUEX Zone 2, 22

Extremely simply, safe and reliable for explosive atmospheres

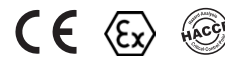


Ex II 3G Ex ec IIC T6 Gc
Ex II 3D Ex tc IIIC T85 Dc

ATEX certificate No: OBAC 19 ATEX 0206X

Up to 8,000lm
Up to 150lm/W
L80 100,000 h

IP66
IK10



Characteristics

- Compressed fibreglass reinforced polyester in yellow RAL 1003. Grey RAL 7035 optional.
- Injected transparent diffuser in impact resistant polycarbonate with UV protection.
- Emergency kit available.
- With PA ATEX cable gland.

Accessories

- Suspension triangles.
- Fixing accessories in SS316L.

Applications



KRATEX Zone 1, 21

Connected lighting with a wide range of options for ATEX projects



- II 2G Ex db IIC T6 Gb
- II 2D Ex tb IIIC T85 Db

ATEX certificate No: INERIS 20 ATEX 0006X
IECEX certificate No: IECEX INE 20.0005X

Up to 11,750lm
Up to 150 lm/W
L80 50,000 h

IP66
Pc: **IK10**
Glass: **IK07 / IK09**



Characteristics

- Profile: UV resistant polycarbonate IK10, or borosilicate glass IK07 (600mm) / IK09 (1200mm).
- Aluminium alloy end caps in yellow RAL1003. Grey RAL 7035 optional.
- 2 entries for 3/4" NPT for cable gland (not included).
- 6500K optional.
- Emergency kit, DALI and Bluetooth dimming available.

Accessories

- Fixing omegas.
- Brass double-sealed EX cable gland.

Applications



OREX 1 Zone 1, 21 OREX 2 Zone 2, 21

High bay lighting specific for explosive environments



- II 2G Ex eb ib mb op is IIC T5...T4 Gb
 - II 2D Ex tb op is IIIC T95°C...T121°C Db
- | OREX 1
- II 3G Ex ec op is IIC T5...T4 Gc
- | OREX 2

ATEX certificate No: OBAC 21 ATEX 0135X
IECEX certificate No: IECEX OBAC 21.0003X

Up to 40,500lm
150lm/W
L80 90,000 h

IP66 / IP67
IK10



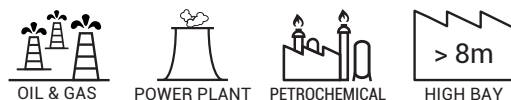
Characteristics

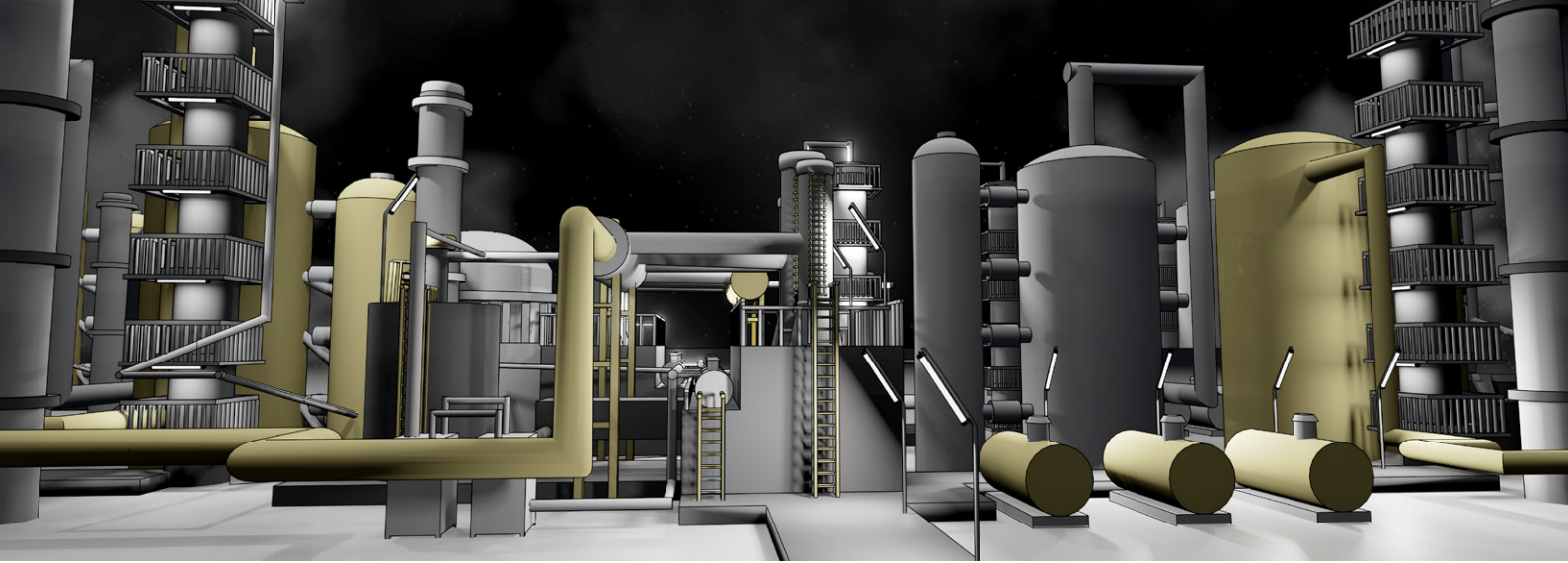
- Copper-free casing aluminium alloy yellow RAL 1003 with surface protected against corrosive elements.
- Hardness glass diffuser
- Wide input voltage range for different regions and industries.
- DALI and 1-10V dimmable optional.

Accessories

- Brackets for wall and tube mounting.
- Connector bag PNCX.
- Junction boxes and EX cable glands.

Applications





Why ZALUX is your reliable partner for safe luminaires suitable for Ex-zones?

40 years experience

Specialized in the development and **manufacturing in Europe** of luminaires with high protection ratings. Our solutions have been installed in chemical, oil & gas or heavy industries in **more than 70 countries**.

Certified quality

Zalux luminaires comply with **ATEX – IECEx standards**, as well as CE and ROHS marks. Their quality is the result of **reliable processes and consistent testing**.

Registered partner

We are a registered vendor in major **EPC companies** and oil and gas end users globally. Our processes and products comply with the **strict requirements** of the most demanding industries.

Specialised team

Our **experienced team** cares for the continuous improvement of our luminaires and is **at your disposal** to help you find the appropriate lighting solution for each project.



What can you expect from our explosion proof LED luminaires?

Safety

Compliance with **electrical, temperature or resistance tests**, some of which are carried out in our laboratories, together with **fully sealed products up to IP69K**, guarantee that Ex-certified luminaires are suitable for hazardous areas where strict ATEX specifications must be met.

Reliability

We choose high quality materials for each application, from impact resistant PMMA, borosilicate glass or 316L stainless steel, among others, to offer **maximum robustness**.

EX luminaires are used during long times in challenging locations, so they offer a **great resistance** to acids, sulphur or salty environments.

Durability

Optimal thermal management allows a **long lifetime** up to 100,000 hours. Together with the low failure rate of electrical components and the **high energy efficiency**, it implies **nearly zero maintenance** while keeping lighting quality, which represents **huge savings**.

5 YEARS
warranty

ZALUX, S.A.

Avda. Manuel Rodríguez Ayuso, 114
Centro Empresarial Miralbueno
Planta 1ª – Local P2.
E-50012 Zaragoza, Spain
Tel.: +34 976 462 200
info@zalux.com
www.zalux.com

